

KDM6A antibody [N2C1], Internal

Cat. No. GTX121246

Host	Rabbit
Clonality	Polyclonal
Isotype	IgG
Applications	WB, ICC/IF, IHC-P, IP, ChIP assay
Reactivity	Human, Mouse

References (10)

Package

100 µl, 25 µl

Applications

Application Note

*Optimal dilutions/concentrations should be determined by the researcher.

Suggested dilution	Recommended dilution
WB	1:500-1:3000
ICC/IF	1:100-1:1000
IHC-P	1:100-1:1000
IP	1:100-1:500
ChIP assay	Assay dependent

Not tested in other applications.

Calculated MW 154 kDa. ([Note](#))

Properties

Form	Liquid
Buffer	PBS, 20% Glycerol
Preservative	0.025% ProClin 300
Storage	Store as concentrated solution. Centrifuge briefly prior to opening vial. For short-term storage (1-2 weeks), store at 4°C. For long-term storage, aliquot and store at -20°C or below. Avoid multiple freeze-thaw cycles.
Concentration	0.78 mg/ml (Please refer to the vial label for the specific concentration.)
Immunogen	Recombinant protein encompassing a sequence within the center region of human KDM6A. The exact sequence is proprietary.
Purification	Purified by antigen-affinity chromatography.
Conjugation	Unconjugated

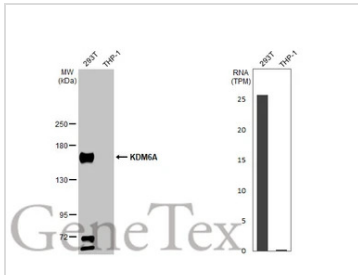


For full product information, images and publications, please visit our [website](#).

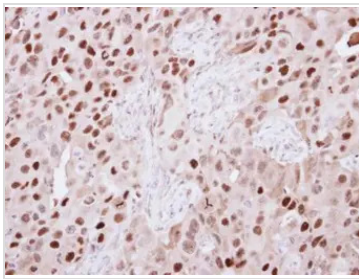
For laboratory research use only. Not for any clinical, therapeutic, or diagnostic use in humans or animals. Not for animal or human consumption.

Note

Purchasers shall not, and agree not to enable third parties to, analyze, copy, reverse engineer or otherwise attempt to determine the structure or sequence of the product.

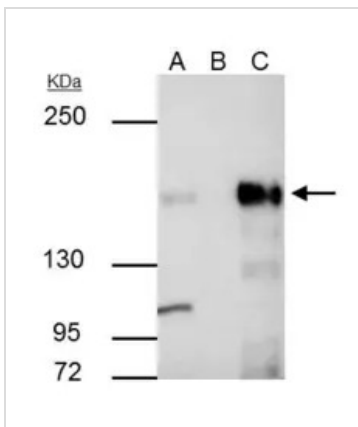
DATA IMAGES

GTx121246 WB Image

Various whole cell extracts (30 µg) were separated by 5% SDS-PAGE, and the membrane was blotted with KDM6A antibody [N2C1], Internal (GTx121246) diluted at 1:1000. The HRP-conjugated anti-rabbit IgG antibody (GTx213110-01) was used to detect the primary antibody. Corresponding RNA expression data for the same cell lines are based on Human Protein Atlas program.


GTx121246 IHC-P Image

Immunohistochemical analysis of paraffin-embedded H441 xenograft, using KDM6A(GTx121246) antibody at 1:250 dilution.

Antigen Retrieval: Trilogy™ (EDTA based, pH 8.0) buffer, 15min


GTx121246 IP Image

KDM6A antibody [N2C1], Internal immunoprecipitates KDM6A protein in IP experiments.

IP samples: SK-N-SH whole cell extract

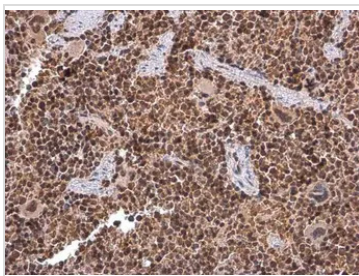
A. 30 µg SK-N-SH whole cell extract

B. Control with 4 µg of preimmune Rabbit IgG

C. Immunoprecipitation of KDM6A protein by 4 µg KDM6A antibody [N2C1], Internal (GTx121246)
5 % SDS-PAGE

The immunoprecipitated KDM6A protein was detected by KDM6A antibody [N2C1], Internal (GTx121246) diluted at 1:500.

[EasyBlot anti-rabbit IgG (GTx221666-01) was used as a secondary reagent]


GTx121246 IHC-P Image

KDM6A antibody [N2C1], Internal detects KDM6A protein at nucleus by immunohistochemical analysis.

Sample: Paraffin-embedded mouse spleen.

KDM6A stained by KDM6A antibody [N2C1], Internal (GTx121246) diluted at 1:500.

Antigen Retrieval: Citrate buffer, pH 6.0, 15 min



For full product information, images and publications, please visit our [website](https://www.genetex.com).