

ORP8 antibody

Cat. No. GTX121273

Host	Rabbit
Clonality	Polyclonal
Isotype	IgG
Applications	WB, ICC/IF
Reactivity	Human

References (4)

Package

100 µl, 25 µl

Applications

Application Note

*Optimal dilutions/concentrations should be determined by the researcher.

Suggested dilution	Recommended dilution
WB	1:5000-1:20000
ICC/IF	1:100-1:1000

Not tested in other applications.

Calculated MW 101 kDa. ([Note](#))

Properties

Form	Liquid
Buffer	PBS, 1% BSA, 20% Glycerol
Preservative	0.025% ProClin 300
Storage	Store as concentrated solution. Centrifuge briefly prior to opening vial. For short-term storage (1-2 weeks), store at 4°C. For long-term storage, aliquot and store at -20°C or below. Avoid multiple freeze-thaw cycles.
Concentration	0.43 mg/ml (Please refer to the vial label for the specific concentration.)
Immunogen	Recombinant protein encompassing a sequence within the center region of human ORP8. The exact sequence is proprietary.
Purification	Purified by antigen-affinity chromatography.
Conjugation	Unconjugated

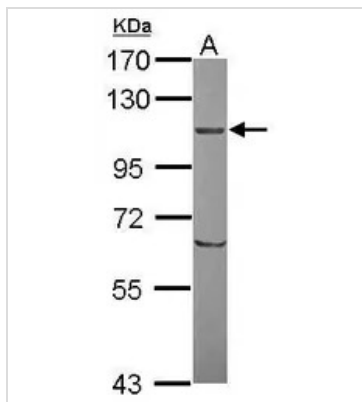
Note

For laboratory research use only. Not for any clinical, therapeutic, or diagnostic use in humans or animals. Not for animal or human consumption.

Purchasers shall not, and agree not to enable third parties to, analyze, copy, reverse engineer or otherwise attempt to determine the structure or sequence of the product.

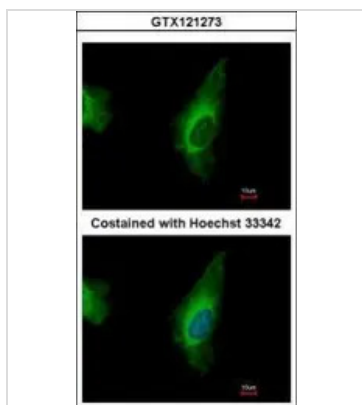
For full product information, images and publications, please visit our [website](#).

DATA IMAGES



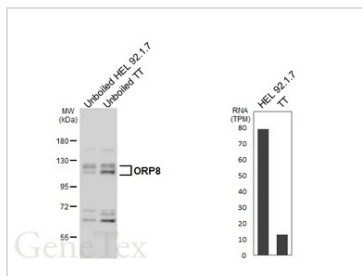
GTX121273 WB Image

Sample (30 ug of whole cell lysate)
 A: U87-MG
 7.5% SDS PAGE
 GTX121273 diluted at 1:10000



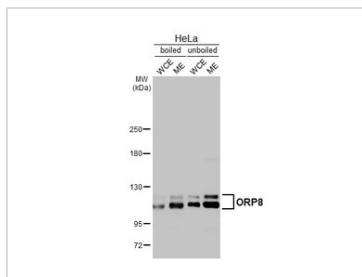
GTX121273 ICC/IF Image

Immunofluorescence analysis of methanol-fixed HeLa, using ORP8(GTX121273) antibody at 1:500 dilution.



GTX121273 WB Image

Unboiled various whole cell extracts (30 µg) were separated by 7.5% SDS-PAGE, and the membrane was blotted with ORP8 antibody (GTX121273) diluted at 1:1000. The HRP-conjugated anti-rabbit IgG antibody (GTX213110-01) was used to detect the primary antibody. Corresponding RNA expression data for the same cell lines are based on Human Protein Atlas program.



GTX121273 WB Image

Boiled and unboiled HeLa whole cell and membrane extracts (30 µg) were separated by 5% SDS-PAGE, and the membrane was blotted with ORP8 antibody (GTX121273) diluted at 1:1000. The HRP-conjugated anti-rabbit IgG antibody (GTX213110-01) was used to detect the primary antibody. (WCE: whole cell extract; ME: membrane extract)



For full product information, images and publications, please visit our [website](http://www.genetex.com).