

## Human REG1 beta protein, His tag

## Cat. No. GTX121293-pro

Species	Human
---------	-------

## Package

100 µg, 25 µg

## Properties

Form	Liquid
------	--------

Buffer	PBS, 0.1% SDS
--------	---------------

Preservative	No preservatives
--------------	------------------

Storage	Store as concentrated solution. Centrifuge briefly prior to opening vial. Aliquot and store at -20°C or below. Avoid multiple freeze-thaw cycles.
---------	---

Concentration	Batch dependent (Please refer to the vial label for the specific concentration.)
---------------	--

Region/Sequence	N-terminal His tagged partial fragment of AAH27895
-----------------	--

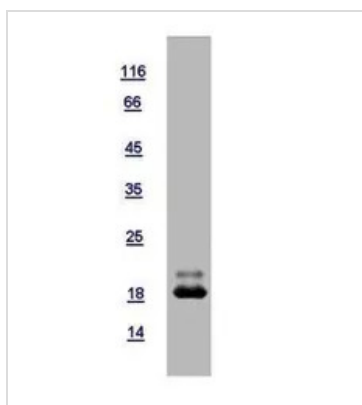
Expression System	E. coli
-------------------	---------

Purity	>90%
--------	------

Conjugation	Unconjugated
-------------	--------------

Note	For In vitro laboratory use only. Not for any clinical, therapeutic, or diagnostic use in humans or animals. Not for animal or human consumption.
------	---

## DATA IMAGES



## GTX121293-pro Image

10µg of GTX121293-pro REG1 beta recombinant protein analyzed using SDS-PAGE and stained with coomassie blue and captured by black and white camera.



For full product information, images and publications, please visit our [website](#).