

ABCG2 antibody

Cat. No. GTX12131

Host	Rabbit
Clonality	Polyclonal
Isotype	IgG
Applications	WB
Reactivity	Mouse, Rat

References (3)

Package

100 µg

Applications

Application Note

*Optimal dilutions/concentrations should be determined by the researcher.

Suggested dilution	Recommended dilution
WB	0.1-0.5µg/ml
Not tested in other applications.	

Calculated MW 73 kDa. ([Note](#))

Properties

Form	Liquid
Buffer	0.1% Na ₂ HPO ₄ , 0.45% NaCl, 2.5% BSA
Preservative	0.025% Thimerosal, 0.025% Sodium azide
Storage	Store as concentrated solution. Centrifuge briefly prior to opening vial. For short-term storage (1-2 weeks), store at 4°C. For long-term storage, aliquot and store at -20°C or below. Avoid multiple freeze-thaw cycles.
Concentration	500 µg/ml (Please refer to the vial label for the specific concentration.)
Immunogen	A synthetic peptide corresponding to a sequence in the middle region of mouse BCRP/ABCG2(152-167aa KNHEKNERINTIIKEL), different from the related rat sequence by one amino acid.
Purification	Purified by antigen-affinity chromatography
Conjugation	Unconjugated

Note

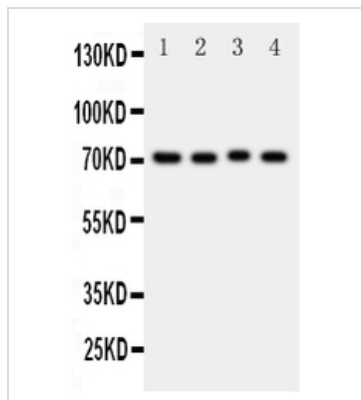
For laboratory research use only. Not for any clinical, therapeutic, or diagnostic use in humans or animals. Not for animal or human consumption.

Purchasers shall not, and agree not to enable third parties to, analyze, copy, reverse engineer or otherwise attempt to determine the structure or sequence of the product.



For full product information, images and publications, please visit our [website](#).

DATA IMAGES



GTX12131 WB Image

WB analysis of various samples using GTX12131 ABCG2 antibody.

Lane 1 : rat liver tissue lysate at 50ug

Lane 2 : rat spleen tissue lysate at 50ug

Lane 3 : rat kidney tissue lysate at 50ug

Lane 4 : mouse spleen tissue lysate at 50ug

Dilution : 0.5 µg/mL



For full product information, images and publications, please visit our [website](#).