

IKB alpha antibody [6A920]

Cat. No. GTX12134

Host	Mouse
Clonality	Monoclonal
Isotype	IgG1
Applications	WB, ICC/IF, IHC-P, FCM, IP, MS
Reactivity	Human, Mouse, Rat

Package
50 µg

Applications

Application Note

*Optimal dilutions/concentrations should be determined by the researcher.

Suggested dilution	Recommended dilution
WB	1 - 2 µg/ml
ICC/IF	1:20 - 1:1000
IHC-P	1:100
FCM	0.25 - 1 µg / 10 ⁶ cells
IP	1 µg/ml
MS	Assay dependent

Not tested in other applications.

Calculated MW 36 kDa. ([Note](#))

Properties

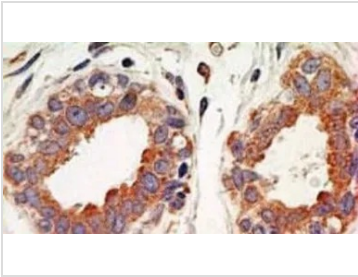
Form	Liquid
Buffer	PBS
Preservative	0.05% Sodium azide
Storage	Store as concentrated solution. Centrifuge briefly prior to opening vial. For short-term storage (1-2 weeks), store at 4°C. For long-term storage, aliquot and store at -20°C or below. Avoid multiple freeze-thaw cycles.
Concentration	1 mg/ml (Please refer to the vial label for the specific concentration.)
Immunogen	A recombinant protein corresponding to amino acid residues 32-291 of human IκBa was used as immunogen.
Purification	Protein G purified
Conjugation	Unconjugated

For full product information, images and publications, please visit our [website](#).

For laboratory research use only. Not for any clinical, therapeutic, or diagnostic use in humans or animals. Not for animal or human consumption.

Note

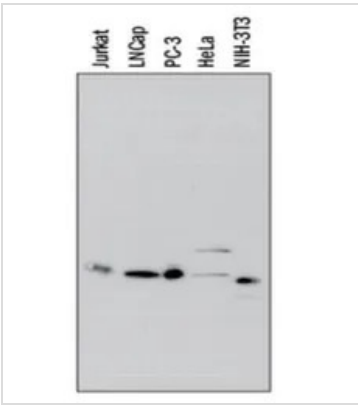
Purchasers shall not, and agree not to enable third parties to, analyze, copy, reverse engineer or otherwise attempt to determine the structure or sequence of the product.

DATA IMAGES

GTX12134 IHC-P Image

IHC-P analysis of human breast tissue using GTX12134 IKB alpha antibody [6A920].

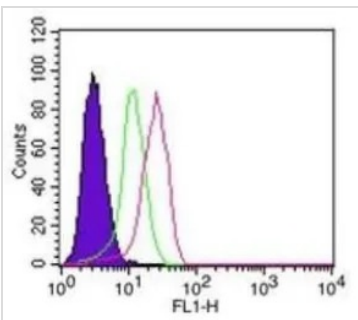
Dilution : 5 µg/ml

Antigen retrieval : 10 mM sodium citrate buffer, pH 6.0


GTX12134 WB Image

WB analysis of Jurkat, LNCaP, PC-3, HeLa, NIH3T3 cell lysates using GTX12134 IKB alpha antibody [6A920].

Dilution : 0.5 µg/ml


GTX12134 FCM Image

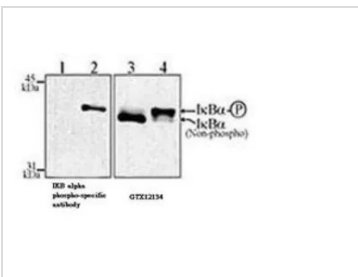
FACS (Intracellular staining) analysis of THP-1 cells using GTX12134 IKB alpha antibody [6A920].

Red : Primary antibody

Green : isotype control

Shaded histogram : cell only

Antibody amount : 0.25µg/10⁶ cells


GTX12134 WB Image

WB analysis of 100 µg/ml ALLN* (N-Acetyl-Leu-Leu-Norleucinal) treated Jurkat cell followed by incubation with (lanes 2 & 4) or without 1 nM TNF-a (1 & 3) using GTX12134 IKB alpha antibody [6A920] and IKB alpha phospho-specific antibody.

*ALLN (N-Acetyl-Leu-Leu-Norleucinal) : Calpain inhibitor and also proteasome inhibitor that prevents Ikbα dephosphorylation



For full product information, images and publications, please visit our [website](https://www.genetex.com).