

IKK alpha antibody [14A231]

Cat. No. GTX12138

| | |
|---------------------|--|
| Host | Mouse |
| Clonality | Monoclonal |
| Isotype | IgG1 |
| Applications | WB, ICC/IF, IHC-P, IHC-Fr, FCM, IP, ChIP assay |
| Reactivity | Human, Mouse, Rat, Primate |

Package
50 µg

Applications

Application Note

*Optimal dilutions/concentrations should be determined by the researcher.

| Suggested dilution | Recommended dilution |
|--------------------|---------------------------------------|
| WB | 1 µg/ml |
| ICC/IF | 1:10 |
| IHC-P | 5 µg/ml |
| IHC-Fr | Assay dependent |
| FCM | 0.25 - 0.5 µg / 10 ⁶ cells |
| IP | 1 - 2 µg/ml |
| ChIP assay | 1:10 - 1:500 |

Not tested in other applications.

Calculated MW 85 kDa. ([Note](#))

Properties

| | |
|----------------------|--|
| Form | Liquid |
| Buffer | PBS |
| Preservative | 0.05% Sodium azide |
| Storage | Store as concentrated solution. Centrifuge briefly prior to opening vial. For short-term storage (1-2 weeks), store at 4°C. For long-term storage, aliquot and store at -20°C or below. Avoid multiple freeze-thaw cycles. |
| Concentration | 1 mg/ml (Please refer to the vial label for the specific concentration.) |
| Immunogen | This antibody was raised against a His-tagged full-length human IKK alpha protein. |
| Purification | Protein G purified |
| Conjugation | Unconjugated |

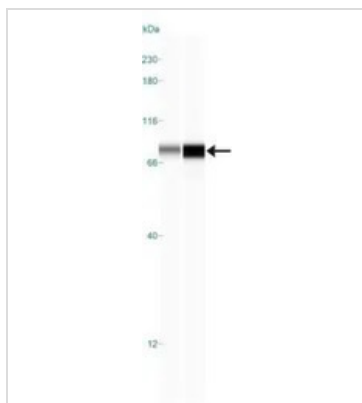


For full product information, images and publications, please visit our [website](#).

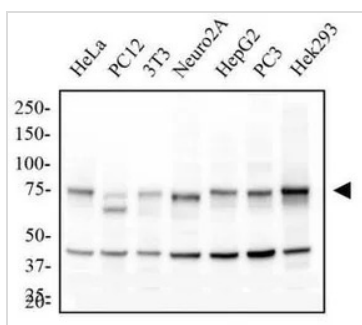
For laboratory research use only. Not for any clinical, therapeutic, or diagnostic use in humans or animals. Not for animal or human consumption.

Note

Purchasers shall not, and agree not to enable third parties to, analyze, copy, reverse engineer or otherwise attempt to determine the structure or sequence of the product.

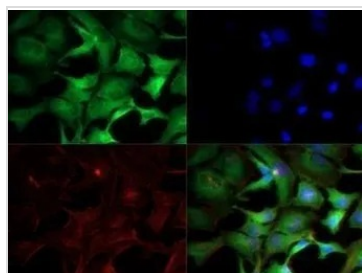
DATA IMAGES

GTx12138 WB Image

WB analysis of Daudi (left) and U937 (right) cell lysate using GTx12138 IKK alpha antibody [14A231].


GTx12138 WB Image

WB analysis of multiple samples using GTx12138 IKK alpha antibody [14A231].

Dilution : 1 µg/ml


GTx12138 ICC/IF Image

ICC/IF analysis of HeLa cells using GTx12138 IKK alpha antibody [14A231].

Green : primary antibody

Red : Tubulin

Blue : DAPI

Dilution : 1:10



For full product information, images and publications, please visit our [website](https://www.genetex.com).