

## FABP7 antibody [N1C3]

Cat. No. GTX121467

<b>Host</b>	Rabbit
<b>Clonality</b>	Polyclonal
<b>Isotype</b>	IgG
<b>Applications</b>	WB, ICC/IF, IHC-Fr
<b>Reactivity</b>	Human, Mouse, Rat, Zebrafish

References ( 1 )

★★★★★ Review ( 1 )

Package

100 µl, 25 µl

## Applications

## Application Note

\*Optimal dilutions/concentrations should be determined by the researcher.

Suggested dilution	Recommended dilution
WB	1:500-1:3000
ICC/IF	1:100-1:1000
IHC-Fr	1:100-1:1000

Not tested in other applications.

Calculated MW 15 kDa. ( [Note](#) )

## Properties

<b>Form</b>	Liquid
<b>Buffer</b>	0.1M Tris, 0.1M Glycine, 20% Glycerol
<b>Preservative</b>	0.01% Thimerosal
<b>Storage</b>	Store as concentrated solution. Centrifuge briefly prior to opening vial. For short-term storage (1-2 weeks), store at 4°C. For long-term storage, aliquot and store at -20°C or below. Avoid multiple freeze-thaw cycles.
<b>Concentration</b>	1 mg/ml (Please refer to the vial label for the specific concentration.)
<b>Immunogen</b>	Full length human FABP7 Recombinant protein.
<b>Purification</b>	Purified by antigen-affinity chromatography.
<b>Conjugation</b>	Unconjugated

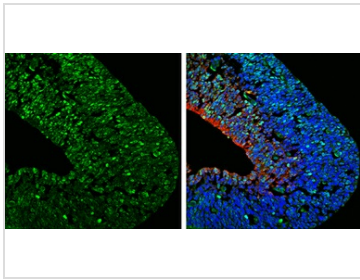
## Note

For laboratory research use only. Not for any clinical, therapeutic, or diagnostic use in humans or animals. Not for animal or human consumption.

Purchasers shall not, and agree not to enable third parties to, analyze, copy, reverse engineer or otherwise attempt to determine the structure or sequence of the product.

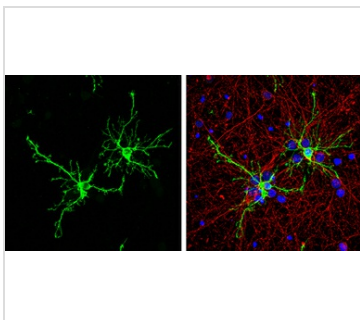
For full product information, images and publications, please visit our [website](#).

DATA IMAGES



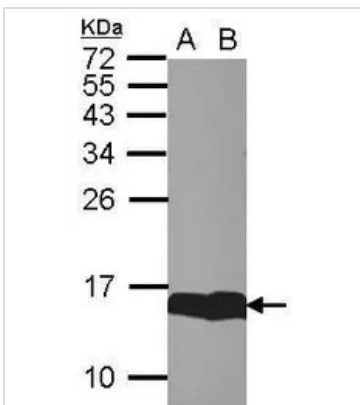
**GTX121467 IHC-Fr Image**

FABP7 antibody [N1C3] detects FABP7 protein expression by immunohistochemical analysis. Sample: Frozen sectioned E13.5 Rat brain. Green: FABP7 protein stained by FABP7 antibody [N1C3] (GTX121467) diluted at 1:250. Red: beta Tubulin 3/ TUJ1, a mature neuron marker, stained by beta Tubulin 3/ TUJ1 antibody [GT11710] (GTX631836) diluted at 1:500. Blue: Fluoroshield with DAPI (GTX30920).



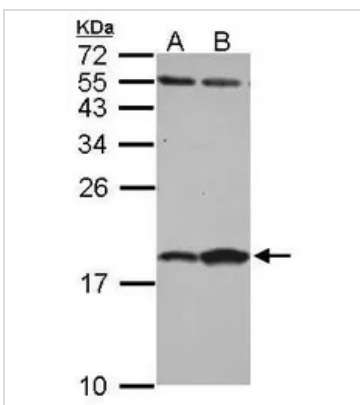
**GTX121467 ICC/IF Image**

FABP7 antibody [N1C3] detects FABP7 protein by immunofluorescent analysis. Sample: DIV9 rat E18 primary hippocampal neuron and glia cells were fixed in 4% paraformaldehyde at RT for 15 min. Green: FABP7 stained by FABP7 antibody [N1C3] (GTX121467) diluted at 1:500. Red: beta Tubulin 3/ Tuj1, stained by beta Tubulin 3/ Tuj1 antibody [GT11710] (GTX631836) diluted at 1:500. Blue: Fluoroshield with DAPI (GTX30920).



**GTX121467 WB Image**

Sample (30 µg of whole cell lysate)  
 A: whole zebrafish  
 B: Zebrafish brain  
 15% SDS PAGE  
 GTX121467 diluted at 1:1000



**GTX121467 WB Image**

Sample (30 ug of whole cell lysate)  
 A: NT2D1  
 B: IMR32  
 15% SDS PAGE  
 GTX121467 diluted at 1:1000



For full product information, images and publications, please visit our [website](#).