

## Geminin antibody

Cat. No. GTX12147

Host	Rabbit
Clonality	Polyclonal
Isotype	IgG
Applications	WB, ICC/IF, IHC-P
Reactivity	Human

Package  
200 µl

## Applications

## Application Note

WB: Use at a dilution of 1/500. Detects a band of approximately 33 kDa (predicted molecular weight: 23.5 kDa). Can be blocked with GTX12408 Geminin peptide. Optimal dilutions/concentrations should be determined by the end user.

Calculated MW 24 kDa. ([Note](#))

## Product Note

This antibody detects a band representing Geminin by Western blot at 33kD on 293T cell lysate, this band can be blocked by the immunising peptide. It also detects a band at about 45kD that is not blocked by the immunising peptide and is thought to be non-specific.

## Properties

Form	Liquid
Buffer	PBS, 1% BSA
Preservative	0.02% Sodium azide
Storage	Store as concentrated solution. Centrifuge briefly prior to opening vial. For short-term storage (1-2 weeks), store at 4°C. For long-term storage, aliquot and store at -20°C or below. Avoid multiple freeze-thaw cycles.
Concentration	0.1 mg/ml (Please refer to the vial label for the specific concentration.)
Immunogen	Synthetic peptide: SSENKNLGGVTQES-C conjugated to KLH, corresponding to amino acids 72-85 of Human Geminin.
Purification	Immunogen affinity purified
Conjugation	Unconjugated

## Note

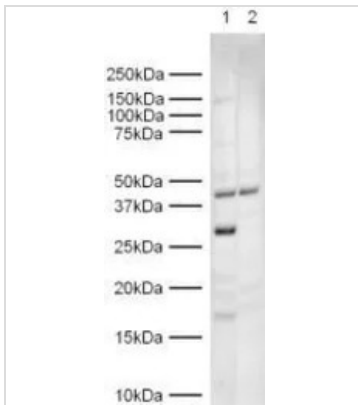
For laboratory research use only. Not for any clinical, therapeutic, or diagnostic use in humans or animals. Not for animal or human consumption.

Purchasers shall not, and agree not to enable third parties to, analyze, copy, reverse engineer or otherwise attempt to determine the structure or sequence of the product.



For full product information, images and publications, please visit our [website](#).

## DATA IMAGES

**GTX12147 WB Image**

WB analysis of 293 lysate using Geminin antibody in the absence (lane 1) or presence (lane 2) of blocking peptide.



For full product information, images and publications, please visit our [website](#).