

ISG15 antibody

Cat. No. GTX121474

Host	Rabbit
Clonality	Polyclonal
Isotype	IgG
Applications	WB, ICC/IF, IHC-P
Reactivity	Human

References (3)

★★★★★ Review (2)

Package

100 µl, 25 µl

Applications

Application Note

*Optimal dilutions/concentrations should be determined by the researcher.

Suggested dilution	Recommended dilution
WB	1:500-1:3000
ICC/IF	1:100-1:1000
IHC-P	1:100-1:1000

Not tested in other applications.

Calculated MW 18 kDa. ([Note](#))

Properties

Form	Liquid
Buffer	PBS, 1% BSA, 20% Glycerol
Preservative	0.025% ProClin 300
Storage	Store as concentrated solution. Centrifuge briefly prior to opening vial. For short-term storage (1-2 weeks), store at 4°C. For long-term storage, aliquot and store at -20°C or below. Avoid multiple freeze-thaw cycles.
Concentration	0.45 mg/ml (Please refer to the vial label for the specific concentration.)
Immunogen	Recombinant protein encompassing a sequence within the center region of human ISG15. The exact sequence is proprietary.
Purification	Purified by antigen-affinity chromatography.
Conjugation	Unconjugated

Note

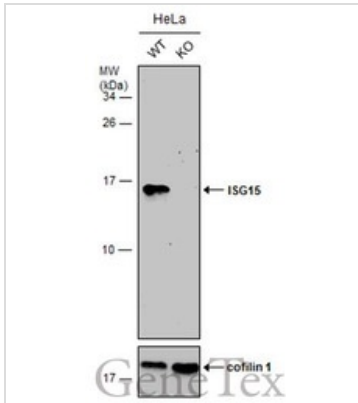
For laboratory research use only. Not for any clinical, therapeutic, or diagnostic use in humans or animals. Not for animal or human consumption.

Purchasers shall not, and agree not to enable third parties to, analyze, copy, reverse engineer or otherwise attempt to determine the structure or sequence of the product.



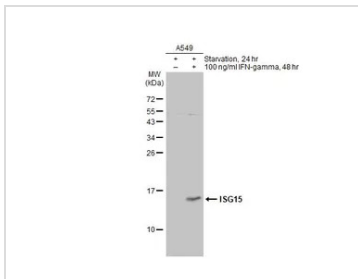
For full product information, images and publications, please visit our [website](#).

DATA IMAGES



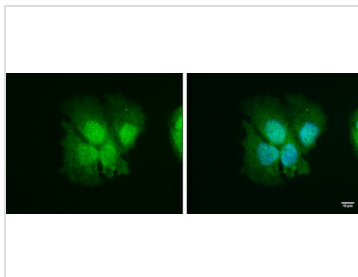
GTX121474 WB Image

Wild-type (WT) and ISG15 knockout (KO) HeLa cell extracts (30 µg) were separated by 15% SDS-PAGE, and the membrane was blotted with ISG15 antibody (GTX121474) diluted at 1:500. The HRP-conjugated anti-rabbit IgG antibody (GTX213110-01) was used to detect the primary antibody, and the signal was developed with Trident ECL plus-Enhanced.



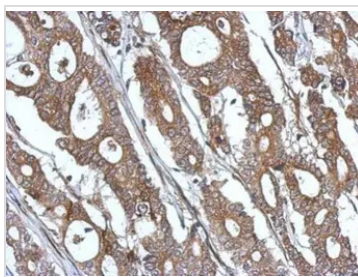
GTX121474 WB Image

Untreated (-) and treated (+) A549 whole cell extracts (30 µg) were separated by 15% SDS-PAGE, and the membrane was blotted with ISG15 antibody (GTX121474) diluted at 1:1000. The HRP-conjugated anti-rabbit IgG antibody (GTX213110-01) was used to detect the primary antibody.



GTX121474 ICC/IF Image

ISG15 antibody detects ISG15 protein at cytoplasm and nucleus by immunofluorescent analysis. Sample: HepG2 cells were fixed in 4% paraformaldehyde for 10 min. Green: ISG15 protein stained by ISG15 antibody (GTX121474) diluted at 1:100. Blue: Hoechst 33342 staining. Scale bar = 10 µm.



GTX121474 IHC-P Image

Immunohistochemical analysis of paraffin-embedded human gastric cancer, using ISG15 antibody (GTX121474) at 1:500 dilution. Antigen Retrieval: Trisodyl™ (EDTA based, pH 8.0) buffer, 15min



For full product information, images and publications, please visit our [website](https://www.genetex.com).