

Histone H1S35ph (phospho Ser35) antibody

Cat. No. GTX121669

Host	Rabbit
Clonality	Polyclonal
Isotype	IgG
Application	WB, ICC/IF, IHC-P
Reactivity	Human

Reference (2)

Package

100 µl, 25 µl

APPLICATION

Application Note

*Optimal dilutions/concentrations should be determined by the researcher.

Suggested dilution	Recommended dilution
WB	1:500-1:3000
ICC/IF	1:100-1:1000
IHC-P	1:100-1:1000

Not tested in other applications.

PROPERTIES

Form	Liquid
Buffer	PBS, 1% BSA, 20% Glycerol
Preservative	0.01% Thimerosal
Storage	Store as concentrated solution. Centrifuge briefly prior to opening vial. For short-term storage (1-2 weeks), store at 4°C. For long-term storage, aliquot and store at -20°C or below. Avoid multiple freeze-thaw cycles.
Concentration	0.93 mg/ml (Please refer to the vial label for the specific concentration.)
Immunogen	Carrier-protein conjugated synthetic peptide surrounding phospho Ser35 of human Histone H1. The exact sequence is proprietary.
Purification	Purified by antigen-affinity chromatography.
Conjugation	Unconjugated

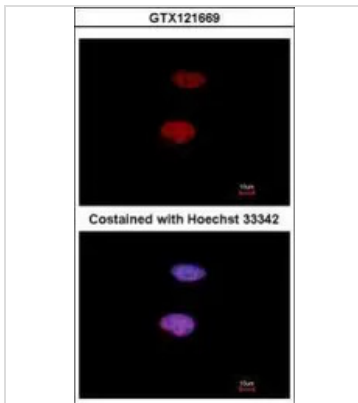
Note

For laboratory research use only. Not for any clinical, therapeutic, or diagnostic use in humans or animals. Not for animal or human consumption.

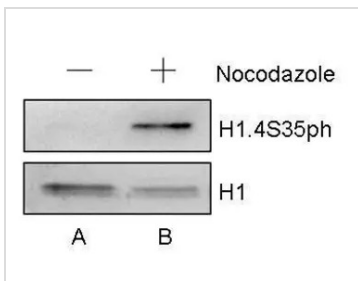
Purchasers shall not, and agree not to enable third parties to, analyze, copy, reverse engineer or otherwise attempt to determine the structure or sequence of the product.



For full product information, images and publications, please visit our [website](#).

DATA IMAGES

GTX121669 ICC/IF Image

Immunofluorescence analysis of paraformaldehyde-fixed HeLa, using Histone H1S35ph (phospho Ser35) (GTX121669) antibody at 1:500 dilution.


GTX121669 WB Image

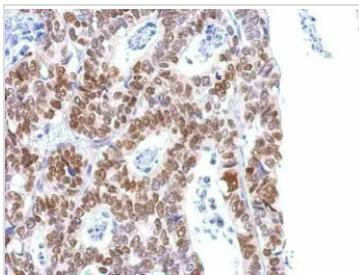
Sample (5 ug of whole cell lysate)

A: Acid-extracted histones from HeLa cell

B: Acid-extracted histones from HeLa cell treated Nocodazole

12% SDS PAGE

GTX121669 diluted at 1:1000


GTX121669 IHC-P Image

Immunohistochemical analysis of paraffin-embedded human gastric cancer, using Histone H1S35ph (phospho Ser35)(GTX121669) antibody at 1:500 dilution.

Antigen Retrieval: Trilogy™ (EDTA based, pH 8.0) buffer, 15min



For full product information, images and publications, please visit our [website](https://www.genetex.com).