

Histone H3K9me3 (Tri-methyl Lys9) antibody

Cat. No. GTX121677

Host	Rabbit
Clonality	Polyclonal
Isotype	IgG
Application	WB, ICC/IF, IHC-P, IP, ChIP assay, EM
Reactivity	Human, Mouse, Rat, Dog

Reference (8)

★★★★★ Review (2)

Package

100 µl, 25 µl

APPLICATION

Application Note

*Optimal dilutions/concentrations should be determined by the researcher.

Suggested dilution	Recommended dilution
WB	1:500-1:3000
ICC/IF	1:100-1:1000
IHC-P	1:100-1:1000
IP	1:100-1:1000
ChIP assay	Assay dependent
EM	Assay dependent

Not tested in other applications.

PROPERTIES

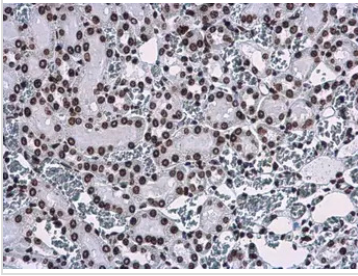
Form	Liquid
Buffer	PBS, 1% BSA, 20% Glycerol
Preservative	0.025% ProClin 300
Storage	Store as concentrated solution. Centrifuge briefly prior to opening vial. For short-term storage (1-2 weeks), store at 4°C. For long-term storage, aliquot and store at -20°C or below. Avoid multiple freeze-thaw cycles.
Concentration	0.2 mg/ml (Please refer to the vial label for the specific concentration.)
Immunogen	Carrier-protein conjugated synthetic peptide surrounding tri-methyl Lys9 of human Histone H3. The exact sequence is proprietary.
Purification	Purified by antigen-affinity chromatography.
Conjugation	Unconjugated

For full product information, images and publications, please visit our [website](#).

For laboratory research use only. Not for any clinical, therapeutic, or diagnostic use in humans or animals. Not for animal or human consumption.

Note

Purchasers shall not, and agree not to enable third parties to, analyze, copy, reverse engineer or otherwise attempt to determine the structure or sequence of the product.

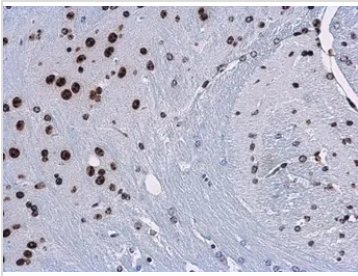
DATA IMAGES

GTX121677 IHC-P Image

Histone H3K9me3 (trimethyl Lys9) antibody detects Histone H3K9me3 (trimethyl Lys9) protein at nucleus in rat kidney by immunohistochemical analysis.

Sample: Paraffin-embedded rat kidney.

Histone H3K9me3 (trimethyl Lys9) antibody (GTX121677) diluted at 1:500.

Antigen Retrieval: Citrate buffer, pH 6.0, 15 min

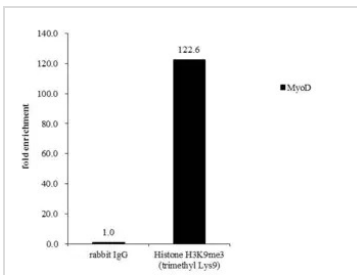

GTX121677 IHC-P Image

Histone H3K9me3 (trimethyl Lys9) antibody detects Histone H3K9me3 (trimethyl Lys9) protein at nucleus in mouse brain by immunohistochemical analysis.

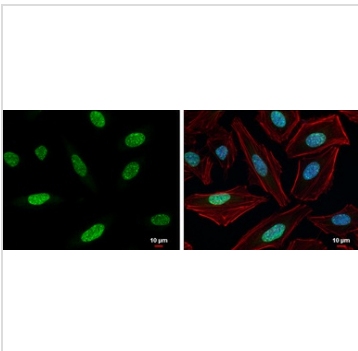
Sample: Paraffin-embedded mouse brain.

Histone H3K9me3 (trimethyl Lys9) antibody (GTX121677) diluted at 1:500.

Antigen Retrieval: Citrate buffer, pH 6.0, 15 min


GTX121677 ChIP assay Image

Cross-linked ChIP was performed with HepG2 chromatin extract and 5 µg of either normal rabbit IgG or anti-Histone H3K9me3 (trimethyl Lys9) antibody. The precipitated DNA was detected by PCR with primer set targeting to MyoD.


GTX121677 ICC/IF Image

Histone H3K9me3 (trimethyl Lys9) antibody detects Histone H3K9me3 (trimethyl Lys9) protein at nucleus by immunofluorescent analysis.

Sample: HeLa cells were fixed in 4% paraformaldehyde at RT for 15 min.

Green: Histone H3K9me3 (trimethyl Lys9) protein stained by Histone H3K9me3 (trimethyl Lys9) antibody (GTX121677) diluted at 1:500.

Red: Phalloidin, a cytoskeleton marker, diluted at 1:200.

Blue: Hoechst 33342 staining.

Scale bar = 10 µm.



For full product information, images and publications, please visit our [website](https://www.genetex.com).