

HDAC2 antibody [HDAC2-62]

Cat. No. GTX12169

Host	Mouse
Clonality	Monoclonal
Isotype	IgG2b
Applications	WB, ICC/IF, IP, ELISA, IHC
Reactivity	Human, Mouse, Rat, Bovine, Dog, Chicken

References (2)
 Package
 100 µl

Applications

Application Note

*Optimal dilutions/concentrations should be determined by the researcher.

Suggested dilution	Recommended dilution
WB	0.25-0.5 µg/ml
ICC/IF	Assay dependent
IP	Assay dependent
ELISA	Assay dependent
IHC	Assay dependent

Not tested in other applications.

Calculated MW 55 kDa. ([Note](#))

Product Note Monoclonal Anti-Histone Deacetylase 2 (HDAC2) recognizes human, bovine, dog, rat, mouse, and chicken HDAC2 (approx. 55 kDa). The antibody epitope resides within amino acids 471-488 of human HDAC2.

Properties

Form	Liquid
Buffer	PBS
Preservative	15mM Sodium azide
Storage	Store as concentrated solution. Centrifuge briefly prior to opening vial. For short-term storage (1-2 weeks), store at 4°C. For long-term storage, aliquot and store at -20°C or below. Avoid multiple freeze-thaw cycles.
Concentration	Batch dependent (Please refer to the vial label for the specific concentration.)
Immunogen	synthetic peptide corresponding to the C-terminal region of human histone deacetylase 2 (amino acid residues 471-488 with N-terminal added cysteine) conjugated to maleimide-activated KLH. This sequence is highly conserved in mouse and chicken (2 and 1 amino acid substitution, respectively).
Purification	Purified immunoglobulin



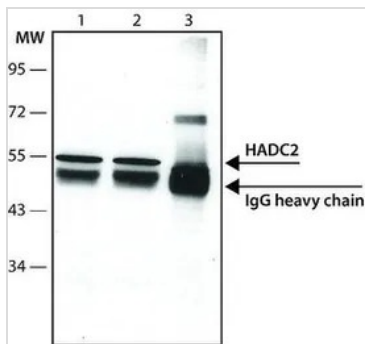
For full product information, images and publications, please visit our [website](#).

Conjugation Unconjugated

For laboratory research use only. Not for any clinical, therapeutic, or diagnostic use in humans or animals. Not for animal or human consumption.

Note Purchasers shall not, and agree not to enable third parties to, analyze, copy, reverse engineer or otherwise attempt to determine the structure or sequence of the product.

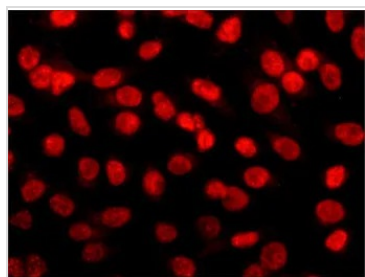
DATA IMAGES



GTX12169 IP Image

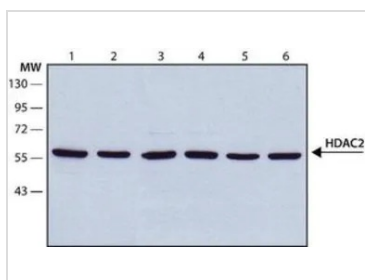
IP analysis of HeLa cell lysate using GTX12169 HDAC2 antibody[HDAC2-62].

- Lane 1 : IP from HeLa cell lysate using 5 µg antibody
- Lane 2 : IP from HeLa cell lysate using 2.5 µg antibody
- Lane 3 : IP from HeLa cell lysate using 5 µg non-relevant antibody



GTX12169 ICC/IF Image

ICC/IF analysis of HeLa cells using GTX12169 HDAC2 antibody [HDAC2-62] at 10 µg/mL. Cells were fixed and permeabilized with cold methanol followed by cold methanol:acetone.



GTX12169 WB Image

WB analysis of (1)HEK-293T (2) HeLa (3) JURKAT (4) K562 (5) Neuro-2a (6) NIH-3T3 cell lysate using GTX12169 HDAC2 antibody [HDAC2-62] at 0.5 µg/mL.



For full product information, images and publications, please visit our [website](#).