

PCAF antibody

Cat. No. GTX12188

Host	Rabbit
Clonality	Polyclonal
Isotype	IgG
Applications	WB, IP
Reactivity	Human, Dog

Package
50 µl

Applications

Application Note

*Optimal dilutions/concentrations should be determined by the researcher.

Suggested dilution	Recommended dilution
WB	1:500
IP	5-10 µg

Not tested in other applications.

Calculated MW 93 kDa. ([Note](#))

Product Note

PCAF (p300/CBP associated factor, P/CAF), a type A histone acetyltransferases (HAT), has been identified in several species. Human PCAF is a ubiquitous protein member of the GCN5-related N-acetyltransferase (GNAT) superfamily. It interacts with the p300 and CBP (CREB-binding protein) transcriptional coactivators and may be found in multi-subunit protein complexes formed from more than 20 polypeptides ranging from 10 to 400 kDa. PCAF shows extensive sequence similarity to human and mouse GCN5 HAT. Human PCAF acetylates all four core-histones. It also acetylates nonhistone proteins such as p53, MyoD, TFIIE-β, TFIIE, GATA-1, EKLF, HMGI (Y), and several other cellular and viral proteins. PCAF contributes to transcriptional activation by modifying chromatin and transcriptional factors. It is required in many cell growth and development processes such as myogenesis, and in nuclear receptor mediated or growth factor-signaled cell activation.

Properties

Form	Liquid
Buffer	PBS
Preservative	15mM Sodium azide
Storage	Store as concentrated solution. Centrifuge briefly prior to opening vial. For short-term storage (1-2 weeks), store at 4°C. For long-term storage, aliquot and store at -20°C or below. Avoid multiple freeze-thaw cycles.
Concentration	Batch dependent (Please refer to the vial label for the specific concentration.)
Immunogen	This sequence is identical to mouse PCAF and varies by 2 amino acids residues in chicken. synthetic peptide corresponding to the C-terminal (amino acids 817-832) of human PCAF with N-terminal added cysteine, conjugated to KLH.
Purification	Purified by affinity chromatography



For full product information, images and publications, please visit our [website](#).

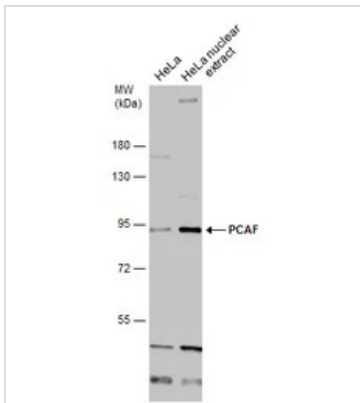
Date 2026 / 05 / 04 Page 1 of 2

Conjugation Unconjugated

For laboratory research use only. Not for any clinical, therapeutic, or diagnostic use in humans or animals. Not for animal or human consumption.

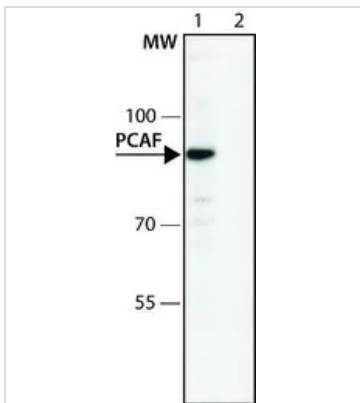
Note Purchasers shall not, and agree not to enable third parties to, analyze, copy, reverse engineer or otherwise attempt to determine the structure or sequence of the product.

DATA IMAGES



GTX12188 WB Image

HeLa whole cell and nuclear extracts (30 µg) were separated by 7.5% SDS-PAGE, and the membrane was blotted with PCAF antibody [C3], C-term (GTX12188) diluted at 1:1000.

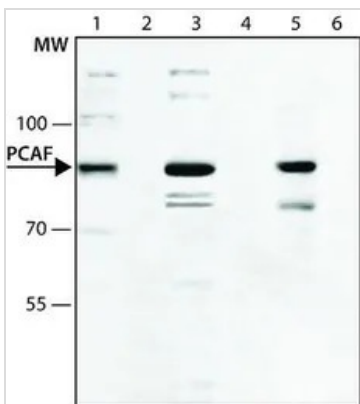


GTX12188 WB Image

WB analysis of Y79 cell lysate using GTX12188 PCAF antibody.

Lane 1 : 2 µg/mL

Lane 2 : Antibody 2 µg/mL + PCAF immunizing peptide (human, 817-832)



GTX12188 WB Image

WB analysis of (Lane 1-2) HeLa, (Lane 3-4) HepG2, (Lane 5-6) Jurkat cell lysate using GTX12188 PCAF antibody at 2 µg/mL.

Lane 1,3,5 : Antibody 2 µg/mL

Lane 2,4,6 : Antibody 2 µg/mL + PCAF immunizing peptide



For full product information, images and publications, please visit our [website](#).