

EGFR antibody [N1-2], N-term

Cat. No. GTX121919

Host	Rabbit
Clonality	Polyclonal
Isotype	IgG
Applications	WB, ICC/IF, IHC-P, FCM, IP, PLA
Reactivity	Human, Mouse, Rat

References (26)

★★★★★ Review (2)

Package

100 µl, 25 µl

Applications

Application Note

*Optimal dilutions/concentrations should be determined by the researcher.

Suggested dilution	Recommended dilution
WB	1:500-1:3000
ICC/IF	Assay dependent
IHC-P	1:100-1:1000
FCM	Assay dependent
IP	1:100-1:500
PLA	Assay dependent

Not tested in other applications.

Calculated MW	134 kDa. (Note)
Observed MW (kDa)	180 kDa.
Product Note	KO/KD validation is based on published data (PMID: 25366117).

Properties

Form	Liquid
Buffer	PBS, 20% Glycerol
Preservative	0.025% ProClin 300
Storage	Store as concentrated solution. Centrifuge briefly prior to opening vial. For short-term storage (1-2 weeks), store at 4°C. For long-term storage, aliquot and store at -20°C or below. Avoid multiple freeze-thaw cycles.
Concentration	1.04 mg/ml (Please refer to the vial label for the specific concentration.)
Immunogen	Recombinant protein encompassing a sequence within the Extracellular domain of human EGFR. The exact sequence is proprietary.

For full product information, images and publications, please visit our [website](#).

Purification Purified by antigen-affinity chromatography.

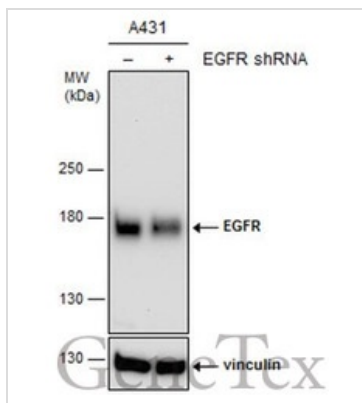
Conjugation Unconjugated

Note

For laboratory research use only. Not for any clinical, therapeutic, or diagnostic use in humans or animals. Not for animal or human consumption.

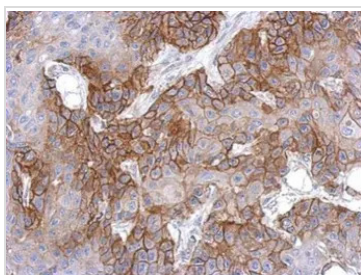
Purchasers shall not, and agree not to enable third parties to, analyze, copy, reverse engineer or otherwise attempt to determine the structure or sequence of the product.

DATA IMAGES



GTx121919 WB Image

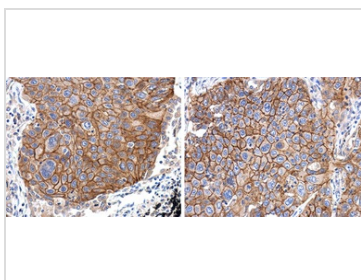
Non-transfected (–) and transfected (+) A431 whole cell extracts (15 µg) were separated by 5% SDS-PAGE, and the membrane was blotted with EGFR antibody [N1-2], N-term (GTx121919) diluted at 1:12000. The HRP-conjugated anti-rabbit IgG antibody (GTx213110-01) was used to detect the primary antibody.



GTx121919 IHC-P Image

Immunohistochemical analysis of paraffin-embedded Cal27 xenograft, using EGFR(GTx121919) antibody at 1:500 dilution.

Antigen Retrieval: Trilogy™ (EDTA based, pH 8.0) buffer, 15min



GTx121919 IHC-P Image

EGFR antibody [N1-2], N-term detects EGFR protein at cell membrane in human non-small cell lung cancer by immunohistochemical analysis.

Sample: Two independent paraffin-embedded human non-small cell lung cancer.

EGFR antibody [N1-2], N-term (GTx121919) diluted at 1:500.

Antigen Retrieval: Citrate buffer, pH 6.0, 15 min



For full product information, images and publications, please visit our [website](https://www.genetex.com).