

Lin28A antibody

Cat. No. GTX121923

Host	Rabbit
Clonality	Polyclonal
Isotype	IgG
Applications	WB, ICC/IF, IHC-P, FCM
Reactivity	Human, Mouse, Pig

References (1)

★★★★☆ Review (1)

Package

100 µl, 25 µl

Applications

Application Note

*Optimal dilutions/concentrations should be determined by the researcher.

Suggested dilution	Recommended dilution
WB	1:500-1:10000
ICC/IF	Assay dependent
IHC-P	1:100-1:1000
FCM	1:50-1:200

Not tested in other applications.

Calculated MW 23 kDa. ([Note](#))

Properties

Form	Liquid
Buffer	PBS, 1% BSA, 20% Glycerol
Preservative	0.01% Thimerosal
Storage	Store as concentrated solution. Centrifuge briefly prior to opening vial. For short-term storage (1-2 weeks), store at 4°C. For long-term storage, aliquot and store at -20°C or below. Avoid multiple freeze-thaw cycles.
Concentration	1 mg/ml (Please refer to the vial label for the specific concentration.)
Immunogen	Recombinant protein encompassing a sequence within the center region of human Lin28A. The exact sequence is proprietary.
Purification	Purified by antigen-affinity chromatography.
Conjugation	Unconjugated



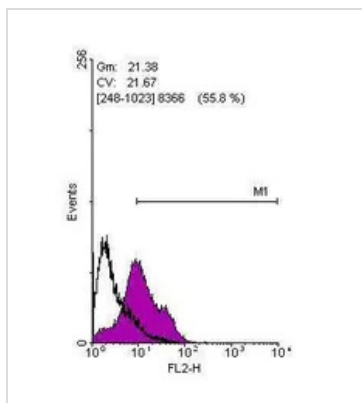
For full product information, images and publications, please visit our [website](#).

For laboratory research use only. Not for any clinical, therapeutic, or diagnostic use in humans or animals. Not for animal or human consumption.

Note

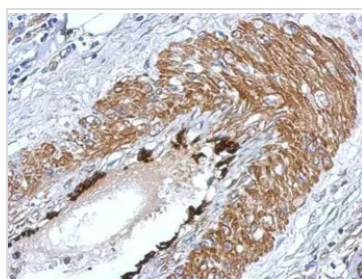
Purchasers shall not, and agree not to enable third parties to, analyze, copy, reverse engineer or otherwise attempt to determine the structure or sequence of the product.

DATA IMAGES



GTx121923 FCM Image

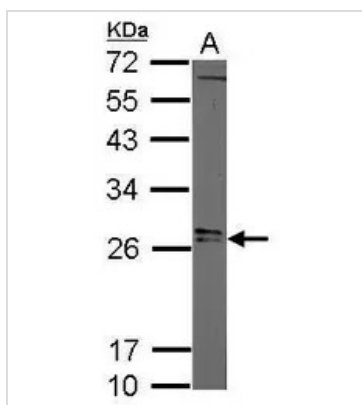
Flow cytometry on human embryonic stem cells, staining with Lin28A (GTx121923) antibody at 1:100 dilution (purple) or rabbit IgG (black).



GTx121923 IHC-P Image

Immunohistochemical analysis of paraffin-embedded human gastric cancer, using Lin28A antibody (GTx121923) antibody at 1:500 dilution.

Antigen Retrieval: Trilogy™ (EDTA based, pH 8.0) buffer, 15min



GTx121923 WB Image

Sample (20 µg of whole cell lysate)

A: mouse ESC

12% SDS PAGE

GTx121923 diluted at 1:3000

The HRP-conjugated anti-rabbit IgG antibody (GTx213110-01) was used to detect the primary antibody.



For full product information, images and publications, please visit our [website](https://www.genetex.com).