

## Nesprin 2 antibody [C3], C-term

Cat. No. GTX121928

Host	Rabbit
Clonality	Polyclonal
Isotype	IgG
Applications	WB, ICC/IF, IHC-P, IHC-Fr
Reactivity	Human, Mouse, Rat

References ( 3 )

Package

100 µl, 25 µl

## Applications

## Application Note

\*Optimal dilutions/concentrations should be determined by the researcher.

Suggested dilution	Recommended dilution
WB	1:500-1:3000
ICC/IF	1:100-1:1000
IHC-P	Assay dependent
IHC-Fr	1:100-1:1000

Not tested in other applications.

Calculated MW 783 kDa. ( [Note](#) )

## Properties

Form	Liquid
Buffer	PBS, 1% BSA, 20% Glycerol
Preservative	0.025% ProClin 300
Storage	Store as concentrated solution. Centrifuge briefly prior to opening vial. For short-term storage (1-2 weeks), store at 4°C. For long-term storage, aliquot and store at -20°C or below. Avoid multiple freeze-thaw cycles.
Concentration	0.44 mg/ml (Please refer to the vial label for the specific concentration.)
Immunogen	Recombinant protein encompassing a sequence within the C-terminus region of mouse Nesprin 2. The exact sequence is proprietary.
Purification	Purified by antigen-affinity chromatography.
Conjugation	Unconjugated

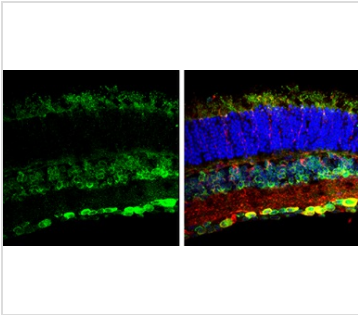


For full product information, images and publications, please visit our [website](#).

For laboratory research use only. Not for any clinical, therapeutic, or diagnostic use in humans or animals. Not for animal or human consumption.

**Note**

Purchasers shall not, and agree not to enable third parties to, analyze, copy, reverse engineer or otherwise attempt to determine the structure or sequence of the product.

**DATA IMAGES**

**GTx121928 IHC-Fr Image**

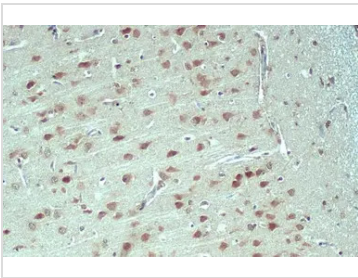
Nesprin 2 antibody [C3], C-term detects Nesprin 2 protein expression by immunohistochemical analysis.

Sample: Frozen sectioned adult mouse retina.

Green: Nesprin 2 protein stained by Nesprin 2 antibody [C3], C-term (GTx121928) diluted at 1:250.

Red: beta Tubulin 3/ TUJ1, stained by beta Tubulin 3/ TUJ1 antibody [GT11710] (GTx631836) diluted at 1:250.

Blue: Fluoroshield with DAPI (GTx30920).

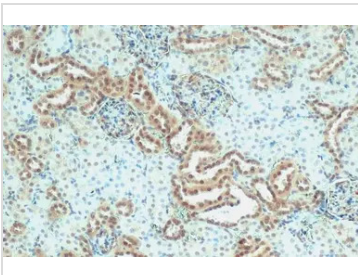

**GTx121928 IHC-P Image**

Nesprin 2 antibody [C3], C-term detects Nesprin 2 protein at cytoplasm and nucleus by immunohistochemical analysis.

Sample: Paraffin-embedded rat brain.

Nesprin 2 stained by Nesprin 2 antibody [C3], C-term (GTx121928) diluted at 1:500.

Antigen Retrieval: Citrate buffer, pH 6.0, 15 min

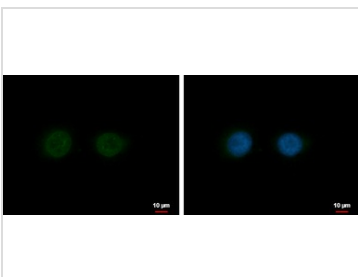

**GTx121928 IHC-P Image**

Nesprin 2 antibody [C3], C-term detects Nesprin 2 protein at cytoplasm and nucleus by immunohistochemical analysis.

Sample: Paraffin-embedded mouse kidney.

Nesprin 2 stained by Nesprin 2 antibody [C3], C-term (GTx121928) diluted at 1:500.

Antigen Retrieval: Citrate buffer, pH 6.0, 15 min


**GTx121928 ICC/IF Image**

Syne2 antibody [C3], C-term detects Syne2 protein at nucleus by immunofluorescent analysis.

Sample: H1299 cells were fixed in 4% paraformaldehyde at RT for 15 min.

Green: Syne2 protein stained by Syne2 antibody [C3], C-term (GTx121928) diluted at 1:500.

Blue: Hoechst 33342 staining.

Scale bar = 10 μm.



For full product information, images and publications, please visit our [website](#).