

SMYD3 antibody

Cat. No. GTX121956

Host	Rabbit
Clonality	Polyclonal
Isotype	IgG
Applications	WB, IHC-P, IP, ChIP assay
Reactivity	Human

Package
100 µl, 25 µl

Applications

Application Note

*Optimal dilutions/concentrations should be determined by the researcher.

Suggested dilution	Recommended dilution
WB	1:500-1:3000
IHC-P	1:100-1:1000
IP	1:100-1:500
ChIP assay	Assay dependent

Not tested in other applications.

Calculated MW 49 kDa. ([Note](#))

Properties

Form	Liquid
Buffer	PBS, 1% BSA, 20% Glycerol
Preservative	0.01% Thimerosal
Storage	Store as concentrated solution. Centrifuge briefly prior to opening vial. For short-term storage (1-2 weeks), store at 4°C. For long-term storage, aliquot and store at -20°C or below. Avoid multiple freeze-thaw cycles.
Concentration	1 mg/ml (Please refer to the vial label for the specific concentration.)
Immunogen	Recombinant protein encompassing a sequence within the center region of human SMYD3. The exact sequence is proprietary.
Purification	Purified by antigen-affinity chromatography.
Conjugation	Unconjugated

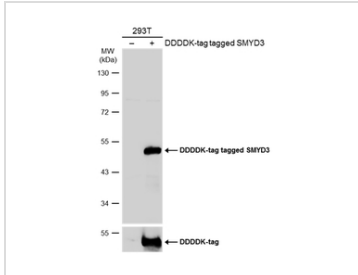


For full product information, images and publications, please visit our [website](#).

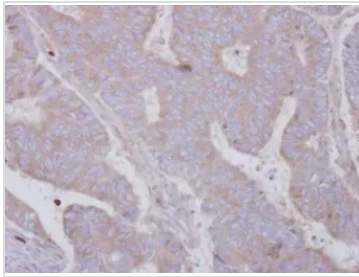
For laboratory research use only. Not for any clinical, therapeutic, or diagnostic use in humans or animals. Not for animal or human consumption.

Note

Purchasers shall not, and agree not to enable third parties to, analyze, copy, reverse engineer or otherwise attempt to determine the structure or sequence of the product.

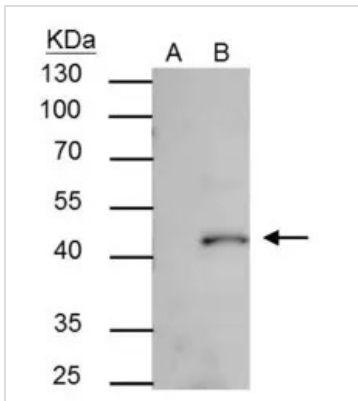
DATA IMAGES

GTx121956 WB Image

Non-transfected (-) and transfected (+) 293T whole cell extracts (30 µg) were separated by 10% SDS-PAGE, and the membrane was blotted with SMYD3 antibody (GTx121956) diluted at 1:1000. The HRP-conjugated anti-rabbit IgG antibody (GTx213110-01) was used to detect the primary antibody.

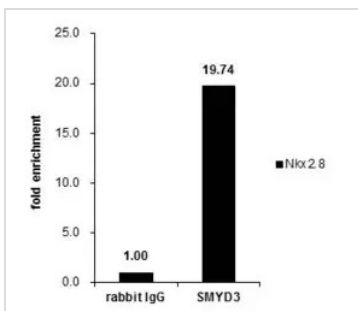

GTx121956 IHC-P Image

Immunohistochemical analysis of paraffin-embedded human colon carcinoma, using SMYD3(GTx121956) antibody at 1:250 dilution.

Antigen Retrieval: Trilogy™ (EDTA based, pH 8.0) buffer, 15min


GTx121956 IP Image

SMYD3 antibody immunoprecipitates SMYD3 protein in IP experiments. IP Sample: 293T whole cell lysate/extract A : Control with 2.5 µg of pre-immune rabbit IgG B : Immunoprecipitation of SMYD3 by 2.5 µg of SMYD3 antibody (GTx121956) 10% SDS-PAGE The immunoprecipitated SMYD3 protein was detected by SMYD3 antibody (GTx121956) diluted at 1 : 1000. EasyBlot anti-rabbit IgG (HRP) (GTx221666-01) was used as a secondary reagent.


GTx121956 ChIP assay Image

Cross-linked ChIP was performed with HepG2 chromatin extract and 5 µg of either control rabbit IgG or anti-SMYD3 antibody. The precipitated DNA was detected by PCR with primer set targeting to 5' flanking region of Nkx2.8.

ChIP experiment and primer designs are based on [Nat Cell Biol. 2004 Aug;6\(8\):731-40](https://doi.org/10.1016/j.natcellbiol.2004.06.010).



For full product information, images and publications, please visit our [website](https://www.genetex.com).