

NOX4 antibody

Cat. No. GTX12205

Host	Rabbit
Clonality	Polyclonal
Isotype	IgG
Applications	WB, IHC-P, FCM
Reactivity	Human, Mouse, Rat

Package
100 µg

Applications

Application Note

*Optimal dilutions/concentrations should be determined by the researcher.

Suggested dilution	Recommended dilution
WB	0.1-0.5µg/ml
IHC-P	0.5-1µg/ml
FCM	1-3µg/1x10 ⁶ cells

Not tested in other applications.

Calculated MW 67 kDa. ([Note](#))

Properties

Form	Liquid
Buffer	0.1% Na ₂ HPO ₄ , 0.45% NaCl, 2.5% BSA
Preservative	0.025% Thimerosal, 0.025% Sodium azide
Storage	Store as concentrated solution. Centrifuge briefly prior to opening vial. For short-term storage (1-2 weeks), store at 4°C. For long-term storage, aliquot and store at -20°C or below. Avoid multiple freeze-thaw cycles.
Concentration	500 µg/ml (Please refer to the vial label for the specific concentration.)
Immunogen	A synthetic peptide corresponding to a sequence at the C-terminus of mouse NADPH oxidase 4(561-578aa NRNNSYGTKFEYNKES), identical to the related rat sequence and different from the related human sequence by two amino acids.
Purification	Purified by antigen-affinity chromatography
Conjugation	Unconjugated



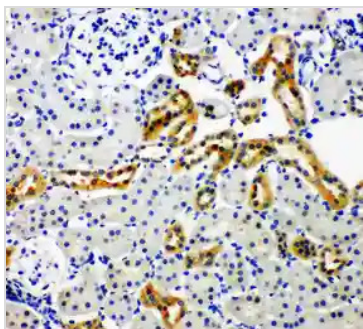
For full product information, images and publications, please visit our [website](#).

For laboratory research use only. Not for any clinical, therapeutic, or diagnostic use in humans or animals. Not for animal or human consumption.

Note

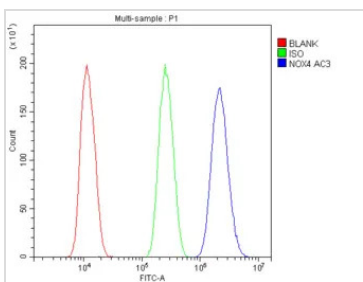
Purchasers shall not, and agree not to enable third parties to, analyze, copy, reverse engineer or otherwise attempt to determine the structure or sequence of the product.

DATA IMAGES



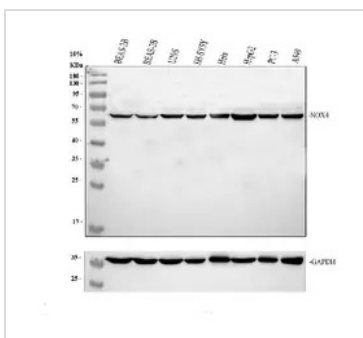
GTX12205 IHC-P Image

IHC-P analysis of rat kidney tissue using GTX12205 NOX4 antibody.
 Antigen retrieval : Heat mediated antigen retrieval was performed in citrate buffer (pH6, epitope retrieval solution) for 20 mins
 Dilution : 1µg/ml



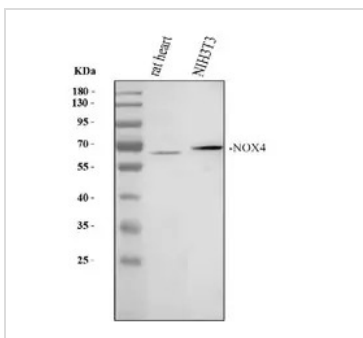
GTX12205 FCM Image

FACS analysis of U20S cells using GTX12205 NOX4 antibody.
 Blue : Primary antibody
 Green : Isotype control
 Red : Cell only control
 Antibody amount : 1µg/1x10⁶ cells for 30 min at 20°C



GTX12205 WB Image

WB analysis of various samples using GTX12205 NOX4 antibody.
 Dilution : 0.5 µg/mL
 Loading : 30 µg



GTX12205 WB Image

WB analysis of various samples using GTX12205 NOX4 antibody.
 Dilution : 0.5 µg/mL
 Loading : 30 µg



For full product information, images and publications, please visit our [website](#).