

RFPL4B antibody [N2C3]

Cat. No. GTX122058

| | |
|---------------------|------------|
| Host | Rabbit |
| Clonality | Polyclonal |
| Isotype | IgG |
| Applications | WB, ICC/IF |
| Reactivity | Human |

Package
100 µl, 25 µl

Applications

Application Note

*Optimal dilutions/concentrations should be determined by the researcher.

| Suggested dilution | Recommended dilution |
|--------------------|----------------------|
| WB | 1:500-1:3000 |
| ICC/IF | 1:100-1:1000 |

Not tested in other applications.

Calculated MW 30 kDa. ([Note](#))

Properties

| | |
|----------------------|--|
| Form | Liquid |
| Buffer | PBS, 1% BSA, 20% Glycerol |
| Preservative | 0.01% Thimerosal |
| Storage | Store as concentrated solution. Centrifuge briefly prior to opening vial. For short-term storage (1-2 weeks), store at 4°C. For long-term storage, aliquot and store at -20°C or below. Avoid multiple freeze-thaw cycles. |
| Concentration | 1 mg/ml (Please refer to the vial label for the specific concentration.) |
| Immunogen | Recombinant protein encompassing a sequence within the center region of human RFPL4B. The exact sequence is proprietary. |
| Purification | Purified by antigen-affinity chromatography. |
| Conjugation | Unconjugated |

Note

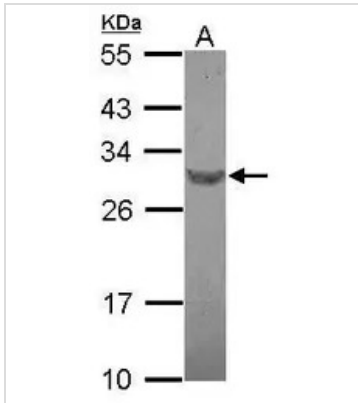
For laboratory research use only. Not for any clinical, therapeutic, or diagnostic use in humans or animals. Not for animal or human consumption.

Purchasers shall not, and agree not to enable third parties to, analyze, copy, reverse engineer or otherwise attempt to determine the structure or sequence of the product.



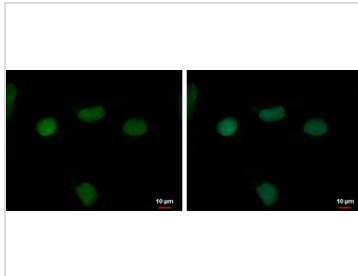
For full product information, images and publications, please visit our [website](#).

DATA IMAGES



GTX122058 WB Image

Sample (30 ug of whole cell lysate)
 A: IMR32
 12% SDS PAGE
 GTX122058 diluted at 1:500



GTX122058 ICC/IF Image

RFPL4B antibody [N2C3] detects RFPL4B protein at nucleus by immunofluorescent analysis.
 Sample: NT2D1 cells were fixed in 4% paraformaldehyde at RT for 15 min.
 Green: RFPL4B protein stained by RFPL4B antibody [N2C3] (GTX122058) diluted at 1:500.
 Blue: Hoechst 33342 staining.



For full product information, images and publications, please visit our [website](#).