

## c-Myc antibody (HRP)

Cat. No. GTX12213

Host	Goat
Clonality	Polyclonal
Isotype	IgG
Applications	WB, ICC/IF, ELISA, IHC
Reactivity	Human

## Package

50 µg

## Applications

## Application Note

\*Optimal dilutions/concentrations should be determined by the researcher.

Suggested dilution	Recommended dilution
WB	1:1,000 - 1:30,000
ICC/IF	1:200-1:500
ELISA	1:10,000-1:100,000
IHC	Assay dependent

Not tested in other applications.

**Calculated MW** 49 kDa. ( [Note](#) )

## Properties

Form	Liquid
Buffer	PBS, 0.2% BSA
Preservative	0.1% ProClin 400
Storage	Store as concentrated solution. Centrifuge briefly prior to opening vial. Store at 4°C.
Concentration	Batch dependent (Please refer to the vial label for the specific concentration.)
Immunogen	Synthetic peptide corresponding to aa 410-419 (EQKLISEEDL) of human myc conjugated to KLH.
Purification	Purified by affinity chromatography
Conjugation	Horseradish peroxidase(HRP) Ratio : 4 HRP molecules per IgG molecule.

## Note

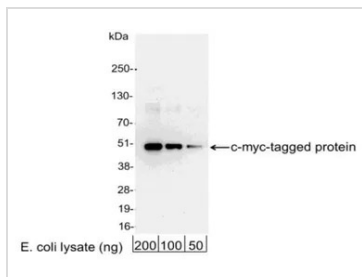
For laboratory research use only. Not for any clinical, therapeutic, or diagnostic use in humans or animals. Not for animal or human consumption.

Purchasers shall not, and agree not to enable third parties to, analyze, copy, reverse engineer or otherwise attempt to determine the structure or sequence of the product.



For full product information, images and publications, please visit our [website](#).

## DATA IMAGES



### GTX12213 WB Image

WB analysis of E. coli expressing a multi-tag fusion protein using GTX12213 c-Myc antibody (HRP).

Dilution : 0.04μg/ml



For full product information, images and publications, please visit our [website](#).