

## Histone H3 antibody

**Cat. No. GTX122150**

<b>Host</b>	Rabbit
<b>Clonality</b>	Polyclonal
<b>Isotype</b>	IgG
<b>Applications</b>	WB, ICC/IF, IHC-P
<b>Reactivity</b>	Human, Mouse, Drosophila

★★★★★ Review ( 1 )

Package  
100 µl, 25 µl

## Applications

**Application Note**

\*Optimal dilutions/concentrations should be determined by the researcher.

Suggested dilution	Recommended dilution
WB	1:1000-1:10000
ICC/IF	1:100-1:1000
IHC-P	1:100-1:1000

Not tested in other applications.

## Properties

<b>Form</b>	Liquid
<b>Buffer</b>	PBS, 1% BSA, 20% Glycerol
<b>Preservative</b>	0.01% Thimerosal
<b>Storage</b>	Store as concentrated solution. Centrifuge briefly prior to opening vial. For short-term storage (1-2 weeks), store at 4°C. For long-term storage, aliquot and store at -20°C or below. Avoid multiple freeze-thaw cycles.
<b>Concentration</b>	1 mg/ml (Please refer to the vial label for the specific concentration.)
<b>Immunogen</b>	Carrier-protein conjugated synthetic peptide encompassing a sequence within the N-terminus region of human Histone H3. The exact sequence is proprietary.
<b>Purification</b>	Purified by antigen-affinity chromatography.
<b>Conjugation</b>	Unconjugated

**Note**

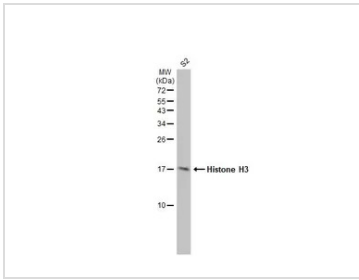
For laboratory research use only. Not for any clinical, therapeutic, or diagnostic use in humans or animals. Not for animal or human consumption.

Purchasers shall not, and agree not to enable third parties to, analyze, copy, reverse engineer or otherwise attempt to determine the structure or sequence of the product.



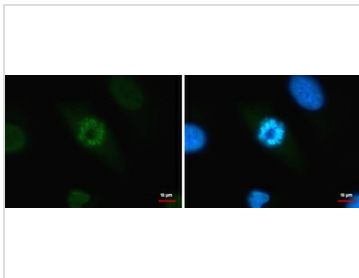
For full product information, images and publications, please visit our [website](#).

DATA IMAGES



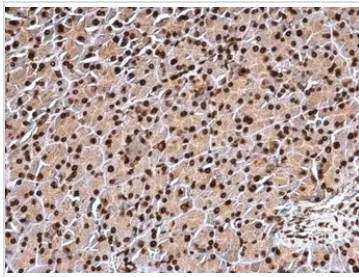
**GTx122150 WB Image**

Whole cell extract (30 µg) was separated by 15% SDS-PAGE, and the membrane was blotted with Histone H3 antibody (GTx122150) diluted at 1:1000. The HRP-conjugated anti-rabbit IgG antibody (GTx213110-01) was used to detect the primary antibody.



**GTx122150 ICC/IF Image**

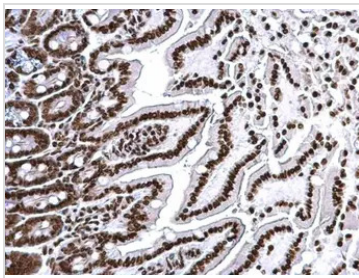
HIST1H3A antibody detects HIST1H3A protein at chromosome by immunofluorescent analysis.  
 Sample: HeLa cells were fixed in 4% paraformaldehyde/PBS for 15 min.  
 Green: HIST1H3A protein stained by HIST1H3A antibody (GTx122150) diluted at 1:500.  
 Blue: Hoechst 33342 staining.



**GTx122150 IHC-P Image**

Histone H3.1 antibody detects Histone H3.1 protein at nucleus on mouse intestine by immunohistochemical analysis.  
 Sample: Paraffin-embedded mouse intestine.  
 Histone H3.1 antibody (GTx122150) dilution: 1:500.

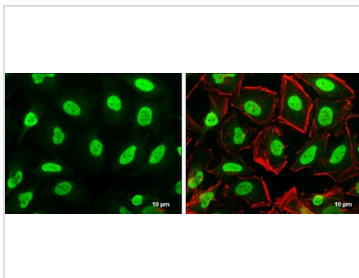
Antigen Retrieval: Trilogy™ (EDTA based, pH 8.0) buffer, 15min



**GTx122150 IHC-P Image**

Histone H3.1 antibody detects Histone H3.1 protein at nucleus on mouse intestine by immunohistochemical analysis.  
 Sample: Paraffin-embedded mouse intestine.  
 Histone H3.1 antibody (GTx122150) dilution: 1:500.

Antigen Retrieval: Trilogy™ (EDTA based, pH 8.0) buffer, 15min



**GTx122150 ICC/IF Image**

Histone H3 antibody detects Histone H3 protein at nucleus by immunofluorescent analysis.  
 Sample: HeLa cells were fixed in 4% paraformaldehyde at RT for 15 min.  
 Green: Histone H3 protein stained by Histone H3 antibody (GTx122150) diluted at 1:500.  
 Red: phalloidin, a cytoskeleton marker, diluted at 1:50.  
 Scale bar = 10 µm.



For full product information, images and publications, please visit our [website](#).