

# Drosophila CG1458 protein, GST tag

**Cat. No. GTX122151-pro**
**Species** Drosophila

**Package**

100 µg, 25 µg

**Properties**
**Form** Liquid

**Buffer** PBS, 0.1% SDS

**Preservative** No preservatives

**Storage** Store as concentrated solution. Centrifuge briefly prior to opening vial. Aliquot and store at -20°C or below. Avoid multiple freeze-thaw cycles.

**Concentration** Batch dependent (Please refer to the vial label for the specific concentration.)

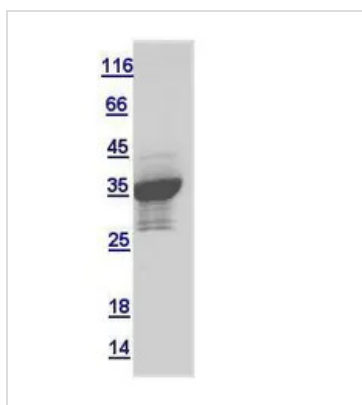
**Region/Sequence** N-terminal GST tagged full length protein of NP\_651684

**Expression System** E. coli

**Purity** >90%

**Conjugation** Unconjugated

**Note** For In vitro laboratory use only. Not for any clinical, therapeutic, or diagnostic use in humans or animals. Not for animal or human consumption.

**DATA IMAGES**

**GTX122151-pro Image**

10µg of GTX122151-pro CG1458 recombinant protein analyzed using SDS-PAGE and stained with coomassie blue and captured by black and white camera.


For full product information, images and publications, please visit our [website](#).