

Metallothionein antibody [UC1MT]

Cat. No. GTX12228

Host	Mouse
Clonality	Monoclonal
Isotype	IgG1
Applications	WB, IHC-P, IHC-Wm, ELISA
Reactivity	Human, Mouse, Rat, Zebrafish, Horse, Fish

References (6)

Package

50 µg

Applications

Application Note

*Optimal dilutions/concentrations should be determined by the researcher.

Suggested dilution	Recommended dilution
WB	1:1000
IHC-P	Assay dependent
IHC-Wm	Assay dependent
ELISA	Assay dependent

Not tested in other applications.

Properties

Form	Liquid
Buffer	PBS, 50% Glycerol
Preservative	0.09% Sodium azide
Storage	Store as concentrated solution. Centrifuge briefly prior to opening vial. For short-term storage (1-2 weeks), store at 4°C. For long-term storage, aliquot and store at -20°C or below. Avoid multiple freeze-thaw cycles.
Concentration	1 mg/ml (Please refer to the vial label for the specific concentration.)
Immunogen	Full length protein (cross linked rabbit liver MT1 and MT2).
Purification	Protein G purified
Conjugation	Unconjugated

Note

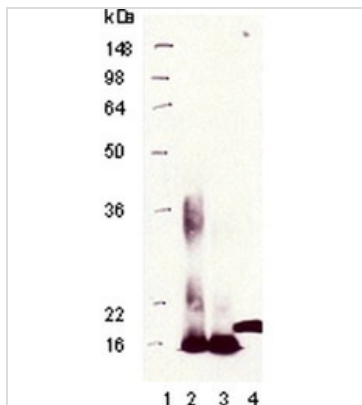
For laboratory research use only. Not for any clinical, therapeutic, or diagnostic use in humans or animals. Not for animal or human consumption.

Purchasers shall not, and agree not to enable third parties to, analyze, copy, reverse engineer or otherwise attempt to determine the structure or sequence of the product.



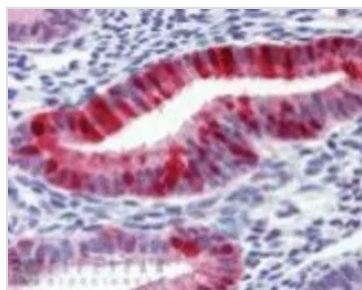
For full product information, images and publications, please visit our [website](#).

DATA IMAGES



GTX12228 WB Image

Western blot analysis using GTX12228 Metallothionein antibody [UC1MT]. Lane 1: MW marker Lane 2: MT I
Lane 3: MT II Lane 4: Mummichug CdCl₂



GTX12228 Image

IHC-P analysis of human uterus tissue using GTX12228 Metallothionein antibody [UC1MT].
Dilution : 10µg/ml



For full product information, images and publications, please visit our [website](https://www.genetex.com).