

# SEC6 antibody [9H5]

**Cat. No. GTX12235**

|                    |   |
|--------------------|---|
| <b>Host</b>        | Mouse   |
| <b>Clonality</b>   | Monoclonal  |
| <b>Isotype</b>     | IgG2a   |
| <b>Application</b> | WB, IP, IHC   |
| <b>Reactivity</b>  | Human, Mouse, Rat, Rabbit, Sheep, Bovine, Dog, Hamster, Pig, Monkey |

**Package**  
50 µg

## APPLICATION

### Application Note

IHC: Use at an assay dependent dilution. IP: Use at a concentration of 12.5 µg/ml. WB: Use at a concentration of 4 µg/ml. Detects a band of approximately 87 kDa. Optimal dilutions/concentrations should be determined by the end user.

**Calculated MW** 86 kDa. ( [Note](#) )

## PROPERTIES

|                      |  |
|----------------------|--|
| <b>Form</b>          | Liquid   |
| <b>Buffer</b>        | PBS, 50% Glycerol, 0.1mM PMSF  |
| <b>Preservative</b>  | No preservative  |
| <b>Storage</b>       | Store as concentrated solution. Centrifuge briefly prior to opening vial. For short-term storage (1-2 weeks), store at 4°C. For long-term storage, aliquot and store at -20°C or below. Avoid multiple freeze-thaw cycles. |
| <b>Concentration</b> | 1 mg/ml (Please refer to the vial label for the specific concentration.)   |
| <b>Immunogen</b>     | Recombinant rat Sec6.  |
| <b>Purification</b>  | Protein G purified   |
| <b>Conjugation</b>   | Unconjugated   |

### Note

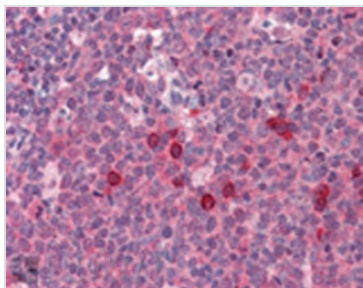
For laboratory research use only. Not for any clinical, therapeutic, or diagnostic use in humans or animals. Not for animal or human consumption.

Purchasers shall not, and agree not to enable third parties to, analyze, copy, reverse engineer or otherwise attempt to determine the structure or sequence of the product.



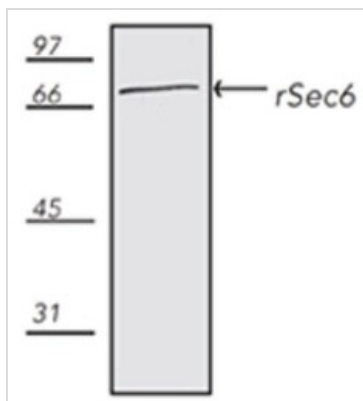
For full product information, images and publications, please visit our [website](#).

## DATA IMAGES



### GTX12235 IHC Image

Immunohistochemistry analysis of human tonsil tissue stained with rSec6, mAb (9H5) at 10µg/ml.



### GTX12235 WB Image

Western blot analysis of pig ESK-4 cell lysate, probed with GTX12235.



For full product information, images and publications, please visit our [website](https://www.genetex.com).