

Chromogranin B antibody

Cat. No. GTX12242

Host	Rabbit
Clonality	Polyclonal
Isotype	IgG
Applications	WB, IHC-P
Reactivity	Human, Mouse, Rat

Package
100 µl

Applications

Application Note

*Optimal dilutions/concentrations should be determined by the researcher.

Suggested dilution	Recommended dilution
WB	1:2,500- 1:10,000
IHC-P	1:500- 1:5,000

Note : A band of 110kDa is detected. Although the predicted mw of CgB is ~76kDa, the highly acidic nature of CgB causes it to run at a higher mw in SDS- PAGE.

Not tested in other applications.

Calculated MW 78 kDa. ([Note](#))

Properties

Form	Liquid
Buffer	Serum
Preservative	No preservatives
Storage	Store as concentrated solution. Centrifuge briefly prior to opening vial. For short-term storage (1-2 weeks), store at 4°C. For long-term storage, aliquot and store at -20°C or below. Avoid multiple freeze-thaw cycles.
Immunogen	Synthetic peptide derived from the C-terminus (aa 641-655) of chromogranin B (accession no. NP_001810). This sequence is identical in human, mouse, and rat chromogranin B.
Purification	Unpurified
Conjugation	Unconjugated

Note

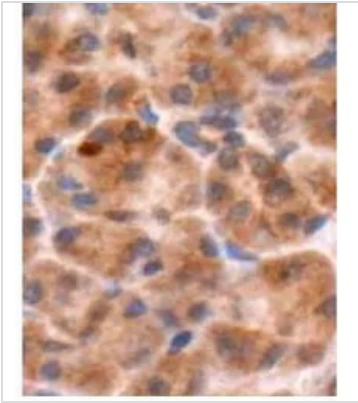
For laboratory research use only. Not for any clinical, therapeutic, or diagnostic use in humans or animals. Not for animal or human consumption.

Purchasers shall not, and agree not to enable third parties to, analyze, copy, reverse engineer or otherwise attempt to determine the structure or sequence of the product.



For full product information, images and publications, please visit our [website](#).

DATA IMAGES

**GTX12242 IHC-P Image**

IHC-P analysis of human pancreas tissue using GTX12242 Chromogranin B antibody.

Dilution : 1:1000



For full product information, images and publications, please visit our [website](#).