

SAMD4B antibody

Cat. No. GTX122549

| | |
|--------------|------------|
| Host | Rabbit |
| Clonality | Polyclonal |
| Isotype | IgG |
| Applications | WB, IHC-P |
| Reactivity | Human |

Package
100 µl, 25 µl

Applications

Application Note

*Optimal dilutions/concentrations should be determined by the researcher.

| Suggested dilution | Recommended dilution |
|--------------------|----------------------|
| WB | 1:500-1:3000 |
| IHC-P | 1:100-1:1000 |

Not tested in other applications.

Calculated MW 75 kDa. ([Note](#))

Properties

| | |
|---------------|--|
| Form | Liquid |
| Buffer | PBS, 1% BSA, 20% Glycerol |
| Preservative | 0.01% Thimerosal |
| Storage | Store as concentrated solution. Centrifuge briefly prior to opening vial. For short-term storage (1-2 weeks), store at 4°C. For long-term storage, aliquot and store at -20°C or below. Avoid multiple freeze-thaw cycles. |
| Concentration | 1 mg/ml (Please refer to the vial label for the specific concentration.) |
| Immunogen | Recombinant protein encompassing a sequence within the C-terminus region of human SAMD4B. The exact sequence is proprietary. |
| Purification | Purified by antigen-affinity chromatography. |
| Conjugation | Unconjugated |

Note

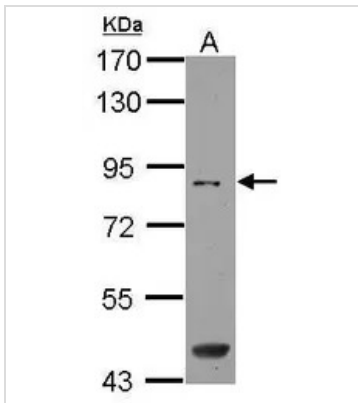
For laboratory research use only. Not for any clinical, therapeutic, or diagnostic use in humans or animals. Not for animal or human consumption.

Purchasers shall not, and agree not to enable third parties to, analyze, copy, reverse engineer or otherwise attempt to determine the structure or sequence of the product.



For full product information, images and publications, please visit our [website](#).

DATA IMAGES



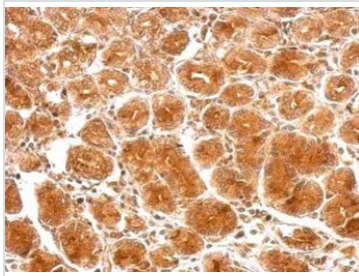
GTx122549 WB Image

Sample (30 ug of whole cell lysate)

A: U87-MG

7.5% SDS PAGE

GTx122549 diluted at 1:1000



GTx122549 IHC-P Image

SAMD4B antibody detects SAMD4B protein at cytosol on human colon carcinoma by immunohistochemical analysis.

Sample: Paraffin-embedded colon carcinoma.

SAMD4B antibody (GTx122549) dilution: 1:500.

Antigen Retrieval: Trilogy™ (EDTA based, pH 8.0) buffer, 15min



For full product information, images and publications, please visit our [website](https://www.genetex.com).