

## Synaptotagmin antibody [ASV48]

Cat. No. GTX12255

Host	Mouse
Clonality	Monoclonal
Isotype	IgG2b
Applications	WB, ICC/IF, IP, IHC
Reactivity	Mouse, Rat, Bovine, Monkey, Shark

Package  
100 µg

## Applications

## Application Note

ICC: Use at a dilution of 1/500. IHC: Use at an assay dependent dilution. IP: Use at an assay dependent dilution. WB: Use at a concentration of 0.1 µg/ml. Detects a band of approximately 65 kDa (predicted molecular weight: 50.5 kDa). Optimal dilutions/concentrations should be determined by the end user.

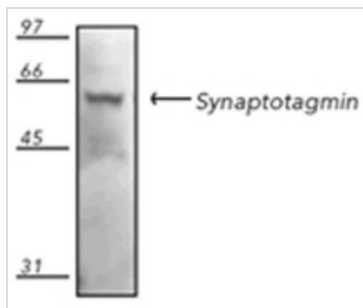
## Properties

Form	Liquid
Buffer	PBS, 50% Glycerol, 0.1mM PMSF
Preservative	0.09% Sodium azide
Storage	Store as concentrated solution. Centrifuge briefly prior to opening vial. For short-term storage (1-2 weeks), store at 4°C. For long-term storage, aliquot and store at -20°C or below. Avoid multiple freeze-thaw cycles.
Concentration	0.7 mg/ml (Please refer to the vial label for the specific concentration.)
Immunogen	Antigen: Rat brain synaptic junction protein complexes.
Purification	Protein G purified
Conjugation	Unconjugated
Note	<p>For laboratory research use only. Not for any clinical, therapeutic, or diagnostic use in humans or animals. Not for animal or human consumption.</p> <p>Purchasers shall not, and agree not to enable third parties to, analyze, copy, reverse engineer or otherwise attempt to determine the structure or sequence of the product.</p>



For full product information, images and publications, please visit our [website](#).

## DATA IMAGES



### GTX12255 WB Image

Western blot analysis of rat brain tissue extract, probed with Synaptotagmin, mAb (ASV48).



For full product information, images and publications, please visit our [website](#).