

Histone H3K9K14ac (Acetyl Lys9/Lys14) antibody

Cat. No. GTX122648

Host	Rabbit
Clonality	Polyclonal
Isotype	IgG
Applications	WB, ICC/IF, Dot
Reactivity	Human, Mouse

References (8)

Package

100 µl, 25 µl

Applications

Application Note

*Optimal dilutions/concentrations should be determined by the researcher.

Suggested dilution	Recommended dilution
WB	1:5000-1:20000
ICC/IF	1:100-1:1000
Dot	Assay dependent

Not tested in other applications.

Properties

Form	Liquid
Buffer	PBS, 1% BSA, 20% Glycerol
Preservative	0.01% Thimerosal
Storage	Store as concentrated solution. Centrifuge briefly prior to opening vial. For short-term storage (1-2 weeks), store at 4°C. For long-term storage, aliquot and store at -20°C or below. Avoid multiple freeze-thaw cycles.
Concentration	1 mg/ml (Please refer to the vial label for the specific concentration.)
Immunogen	Carrier-protein conjugated synthetic peptide surrounding acetyl Lys9/Lys14 of human Histone H3. The exact sequence is proprietary.
Purification	Purified by antigen-affinity chromatography.
Conjugation	Unconjugated

Note

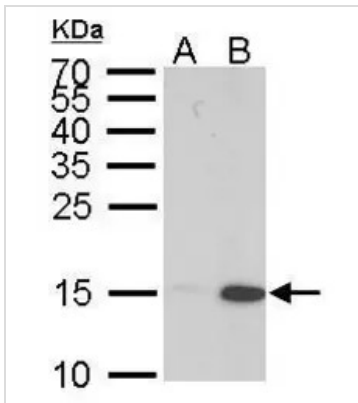
For laboratory research use only. Not for any clinical, therapeutic, or diagnostic use in humans or animals. Not for animal or human consumption.

Purchasers shall not, and agree not to enable third parties to, analyze, copy, reverse engineer or otherwise attempt to determine the structure or sequence of the product.



For full product information, images and publications, please visit our [website](#).

DATA IMAGES



GTX122648 WB Image

Histone H3 (acetyl Lys 9, Lys14) antibody detects Histone H3 (acetyl Lys 9, Lys14) protein by western blot analysis.

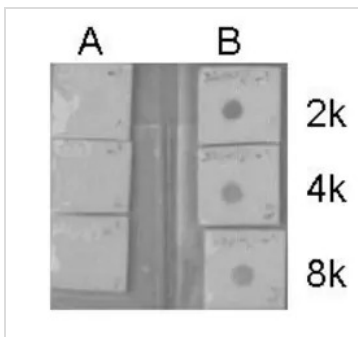
A. 30 μg HeLa whole cell lysate/extract (untreated)

B. 30 μg HeLa whole cell lysate/extract (0.4 μM Trichostatin treatment for 18 hr)

15% SDS-PAGE

Histone H3 (acetyl Lys 9, Lys14) antibody (GTX122648) dilution: 1:10000

The HRP-conjugated anti-rabbit IgG antibody (GTX213110-01) was used to detect the primary antibody.



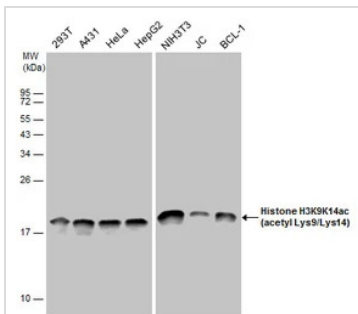
GTX122648 Dot Image

Dotblot analysis of anti-Histone H3 (acetyl Lys 9, Lys14) antibody with peptide samples.

Peptide samples (0.1 μg) were spotted onto positively charged nylon membrane and blotted with Histone H3 (acetyl Lys 9, Lys14) antibody (GTX122648) at different dilution as indicated.

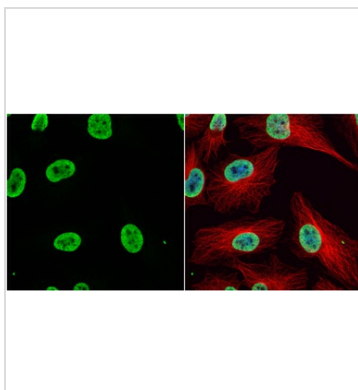
A: Peptide samples of Histone H3.1

B: Peptide samples of Histone H3 (acetyl Lys 9, Lys14)



GTX122648 WB Image

Histone H3K9K14ac (acetyl Lys9/Lys14) antibody detects Histone H3K9K14ac (acetyl Lys9/Lys14) protein by western blot analysis. Various whole cell extracts (30 μg) were separated by 12% SDS-PAGE, and the membrane was blotted with Histone H3K9K14ac (acetyl Lys9/Lys14) antibody (GTX122648) diluted at a dilution of 1:10000. The HRP-conjugated anti-rabbit IgG antibody (GTX213110-01) was used to detect the primary antibody.



GTX122648 ICC/IF Image

Histone H3K9K14ac (acetyl Lys9/Lys14) antibody detects Histone H3K9K14ac (acetyl Lys9/Lys14) protein at nucleus by immunofluorescent analysis.

Sample: HeLa cells were fixed in 4% paraformaldehyde at RT for 15 min.

Green: Histone H3K9K14ac (acetyl Lys9/Lys14) protein stained by Histone H3K9K14ac (acetyl Lys9/Lys14) antibody (GTX122648) diluted at 1:1000.

Red: alpha Tubulin, a cytoskeleton marker, stained by alpha Tubulin antibody [GT114] (GTX628802) diluted at 1:1000.

Blue: Hoechst 33342 staining.



For full product information, images and publications, please visit our [website](https://www.genetex.com).