

ROCK2 (phospho Ser1366) antibody

Cat. No. GTX122651

Host	Rabbit
Clonality	Polyclonal
Isotype	IgG
Application	WB, ICC/IF, IHC-P, IHC-Fr, Immunoassay
Reactivity	Human, Mouse, Rat

Reference (12)

Package

100 µl, 25 µl

APPLICATION

Application Note

*Optimal dilutions/concentrations should be determined by the researcher.

Suggested dilution	Recommended dilution
WB	1:500-1:3000
ICC/IF	1:100-1:1000
IHC-P	1:100-1:1000
IHC-Fr	Assay dependent
Immunoassay	Assay dependent

Not tested in other applications.

Calculated MW 161 kDa. ([Note](#))

PROPERTIES

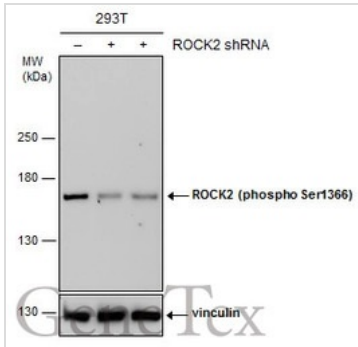
Form	Liquid
Buffer	PBS, 1% BSA, 20% Glycerol
Preservative	0.025% ProClin 300
Storage	Store as concentrated solution. Centrifuge briefly prior to opening vial. For short-term storage (1-2 weeks), store at 4°C. For long-term storage, aliquot and store at -20°C or below. Avoid multiple freeze-thaw cycles.
Concentration	0.32 mg/ml (Please refer to the vial label for the specific concentration.)
Immunogen	Carrier-protein conjugated synthetic peptide surrounding phospho Ser1366 of human ROCK2. The exact sequence is proprietary.
Purification	Purified by antigen-affinity chromatography.
Conjugation	Unconjugated

For full product information, images and publications, please visit our [website](#).

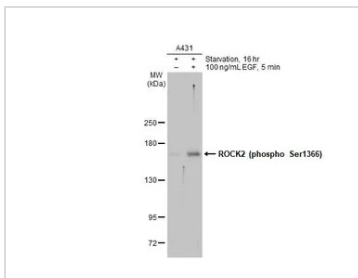
For laboratory research use only. Not for any clinical, therapeutic, or diagnostic use in humans or animals. Not for animal or human consumption.

Note

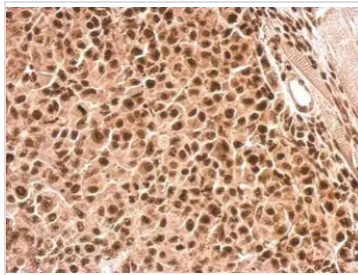
Purchasers shall not, and agree not to enable third parties to, analyze, copy, reverse engineer or otherwise attempt to determine the structure or sequence of the product.

DATA IMAGES

GTX122651 WB Image

Non-transfected (-) and transfected (+) 293T whole cell extracts (30 µg) were separated by 5% SDS-PAGE, and the membrane was blotted with ROCK2 (phospho Ser1366) antibody (GTX122651) diluted at 1:500. The HRP-conjugated anti-rabbit IgG antibody (GTX213110-01) was used to detect the primary antibody.


GTX122651 WB Image

Untreated (-) and treated (+) A431 whole cell extracts (30 µg) were separated by 5% SDS-PAGE, and the membrane was blotted with ROCK2 (phospho Ser1366) antibody (GTX122651) diluted at 1:1000. The HRP-conjugated anti-rabbit IgG antibody (GTX213110-01) was used to detect the primary antibody, and the signal was developed with Trident ECL plus-Enhanced.

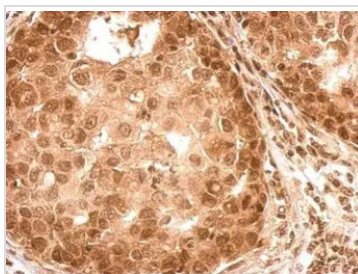

GTX122651 IHC-P Image

ROCK2 (phospho Ser1366) antibody detects ROCK2 protein at nucleus and cytosol on HBL435 xenograft by immunohistochemical analysis.

Sample: Paraffin-embedded HBL435 xenograft.

ROCK2 (phospho Ser1366) antibody (GTX122651) dilution: 1:500.

Antigen Retrieval: Trilogy™ (EDTA based, pH 8.0) buffer, 15min


GTX122651 IHC-P Image

ROCK2 (phospho Ser1366) antibody detects ROCK2 protein at weak nucleus and cytosol on human breast tissue by immunohistochemical analysis.

Sample: Paraffin-embedded human breast tissue.

ROCK2 (phospho Ser1366) antibody (GTX122651) dilution: 1:500.

Antigen Retrieval: Trilogy™ (EDTA based, pH 8.0) buffer, 15min



For full product information, images and publications, please visit our [website](https://www.genetex.com).