

Histone H4K5K8K12K16ac (acetyl Lys5/Lys8/Lys12/Lys16) antibody

Cat. No. GTX122653

Host	Rabbit
Clonality	Polyclonal
Isotype	IgG
Applications	WB, ICC/IF, IHC-P, Dot
Reactivity	Human, Mouse, Rat

References (5)

 Review (1)

Package

100 µl, 25 µl

Applications

Application Note

*Optimal dilutions/concentrations should be determined by the researcher.

Suggested dilution	Recommended dilution
WB	1:5000-1:20000
ICC/IF	1:100-1:1000
IHC-P	1:100-1:1000
Dot	Assay dependent

Not tested in other applications.

Properties

Form	Liquid
Buffer	PBS, 1% BSA, 20% Glycerol
Preservative	0.01% Thimerosal
Storage	Store as concentrated solution. Centrifuge briefly prior to opening vial. For short-term storage (1-2 weeks), store at 4°C. For long-term storage, aliquot and store at -20°C or below. Avoid multiple freeze-thaw cycles.
Concentration	1 mg/ml (Please refer to the vial label for the specific concentration.)
Immunogen	Carrier-protein conjugated synthetic peptide surrounding acetyl Lys5/Lys8/Lys12/Lys16 of human Histone H4. The exact sequence is proprietary.
Purification	Purified by antigen-affinity chromatography.
Conjugation	Unconjugated

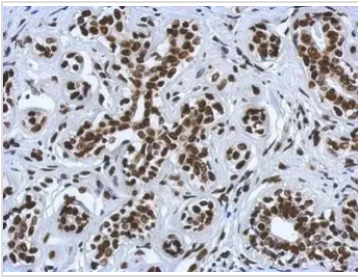
Note

For laboratory research use only. Not for any clinical, therapeutic, or diagnostic use in humans or animals. Not for animal or human consumption.

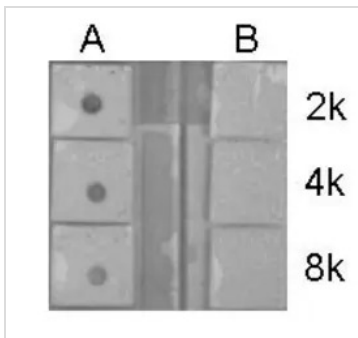
Purchasers shall not, and agree not to enable third parties to, analyze, copy, reverse engineer or otherwise attempt to determine the structure or sequence of the product.

For full product information, images and publications, please visit our [website](#).

Date 2026 / 02 / 01 Page 1 of 2

DATA IMAGES

GTX122653 IHC-P Image

Immunohistochemical analysis of paraffin-embedded human breast cancer, using Histone H4K5K8K12K16ac (acetyl Lys5/Lys8/Lys12/Lys16)(GTX122653) antibody at 1:500 dilution.
Antigen Retrieval: Trilogy™ (EDTA based, pH 8.0) buffer, 15min

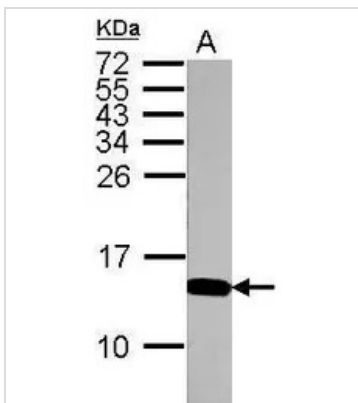

GTX122653 Dot Image

Dotblot analysis of anti-Histone H4K5K8K12K16ac (acetyl Lys5/Lys8/Lys12/Lys16) antibody with peptide samples.

Peptide samples (0.1 µg) were spotted onto positively charged nylon membrane and blotted with Histone H4K5K8K12K16ac (acetyl Lys5/Lys8/Lys12/Lys16) antibody (GTX122653) at different dilution as indicated.

A: Peptide samples of Histone H4K5K8K12K16ac (acetyl Lys5/Lys8/Lys12/Lys16)

B: Peptide samples of Histone H4

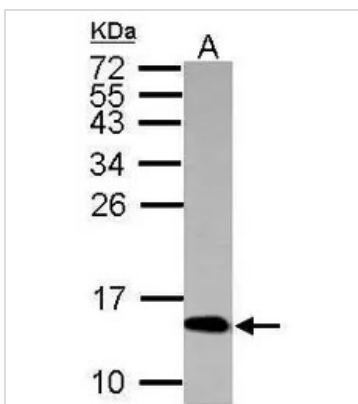

GTX122653 WB Image

Sample (30 ug of whole cell lysate)

A: PC-12

15% SDS PAGE

GTX122653 diluted at 1:10000


GTX122653 WB Image

Sample (30 ug of whole cell lysate)

A: HeLa

15% SDS PAGE

GTX122653 diluted at 1:10000



For full product information, images and publications, please visit our [website](https://www.genetex.com).