

ZFAT antibody

Cat. No. GTX122715

Host	Rabbit
Clonality	Polyclonal
Isotype	IgG
Applications	WB, ICC/IF, IHC-P
Reactivity	Human, Mouse

Package
100 µl, 25 µl

Applications

Application Note

*Optimal dilutions/concentrations should be determined by the researcher.

Suggested dilution	Recommended dilution
WB	1:500-1:3000
ICC/IF	1:100-1:1000
IHC-P	1:100-1:1000

Not tested in other applications.

Calculated MW 139 kDa. ([Note](#))

Properties

Form	Liquid
Buffer	0.1M Tris, 0.1M Glycine, 20% Glycerol
Preservative	0.01% Thimerosal
Storage	Store as concentrated solution. Centrifuge briefly prior to opening vial. For short-term storage (1-2 weeks), store at 4°C. For long-term storage, aliquot and store at -20°C or below. Avoid multiple freeze-thaw cycles.
Concentration	0.71 mg/ml (Please refer to the vial label for the specific concentration.)
Immunogen	Recombinant protein encompassing a sequence within the C-terminus region of human ZFAT. The exact sequence is proprietary.
Purification	Purified by antigen-affinity chromatography.
Conjugation	Unconjugated

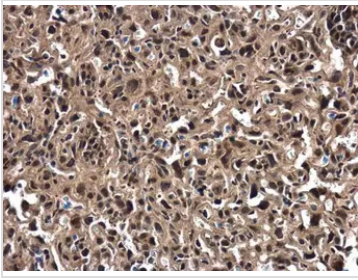
Note

For laboratory research use only. Not for any clinical, therapeutic, or diagnostic use in humans or animals. Not for animal or human consumption.

Purchasers shall not, and agree not to enable third parties to, analyze, copy, reverse engineer or otherwise attempt to determine the structure or sequence of the product.



For full product information, images and publications, please visit our [website](#).

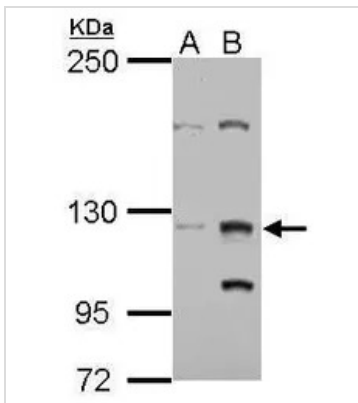
DATA IMAGES

GTx122715 IHC-P Image

ZFAT antibody detects ZFAT protein at cytoplasm and nucleus in mouse placenta by immunohistochemical analysis.

Sample: Paraffin-embedded mouse placenta.

ZFAT antibody (GTx122715) diluted at 1:500.

Antigen Retrieval: Citrate buffer, pH 6.0, 15 min


GTx122715 WB Image

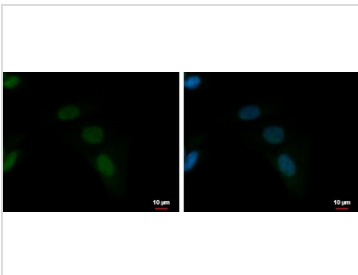
Sample (30 ug of whole cell lysate)

A: Jurkat

B: Raji

5% SDS PAGE

GTx122715 diluted at 1:1000


GTx122715 ICC/IF Image

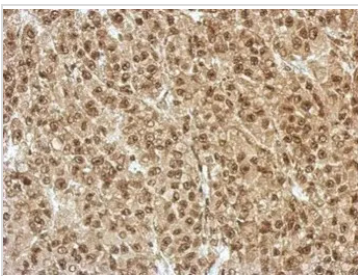
ZFAT antibody detects ZFAT protein at nucleus by immunofluorescent analysis.

Sample: SKNSH cells were fixed in 4% paraformaldehyde at RT for 15 min.

Green: ZFAT protein stained by ZFAT antibody (GTx122715) diluted at 1:500.

Blue: Hoechst 33342 staining.

Scale bar = 10 μm.


GTx122715 IHC-P Image

Immunohistochemical analysis of paraffin-embedded HBL435 xenograft, using ZFAT(GTx122715) antibody at 1:500 dilution.

Antigen Retrieval: Trilogy™ (EDTA based, pH 8.0) buffer, 15min



For full product information, images and publications, please visit our [website](https://www.genetex.com).