

STUB1 antibody [N1C3]

Cat. No. GTX122827

Host	Rabbit
Clonality	Polyclonal
Isotype	IgG
Applications	WB, IHC-P
Reactivity	Human, Mouse, Rat

 Review (1)

Package
100 µl, 25 µl

Applications

Application Note

*Optimal dilutions/concentrations should be determined by the researcher.

Suggested dilution	Recommended dilution
WB	1:5000-1:20000
IHC-P	1:100-1:1000

Not tested in other applications.

Calculated MW 35 kDa. ([Note](#))

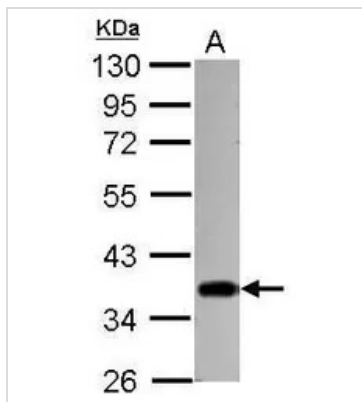
Properties

Form	Liquid
Buffer	PBS, 1% BSA, 20% Glycerol
Preservative	0.01% Thimerosal
Storage	Store as concentrated solution. Centrifuge briefly prior to opening vial. For short-term storage (1-2 weeks), store at 4°C. For long-term storage, aliquot and store at -20°C or below. Avoid multiple freeze-thaw cycles.
Concentration	1 mg/ml (Please refer to the vial label for the specific concentration.)
Immunogen	Recombinant protein encompassing a sequence within the center region of human STUB1. The exact sequence is proprietary.
Purification	Purified by antigen-affinity chromatography.
Conjugation	Unconjugated
Note	For laboratory research use only. Not for any clinical, therapeutic, or diagnostic use in humans or animals. Not for animal or human consumption. Purchasers shall not, and agree not to enable third parties to, analyze, copy, reverse engineer or otherwise attempt to determine the structure or sequence of the product.



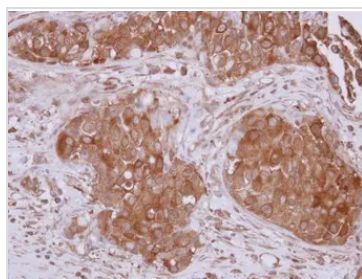
For full product information, images and publications, please visit our [website](#).

DATA IMAGES



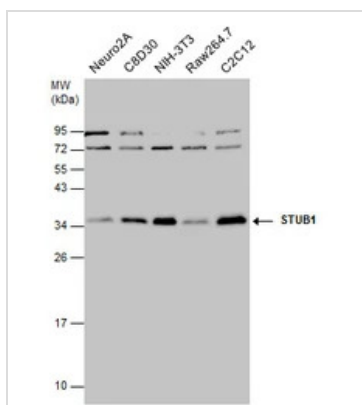
GTX122827 WB Image

Sample (30 ug of whole cell lysate)
 A: 293T
 10% SDS PAGE
 GTX122827 diluted at 1:10000



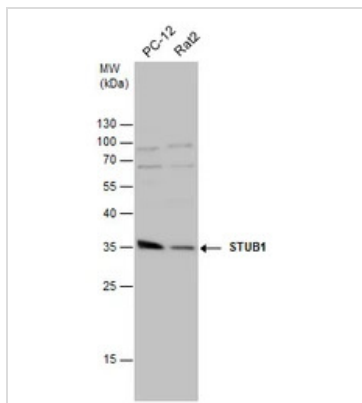
GTX122827 IHC-P Image

Immunohistochemical analysis of paraffin-embedded human breast cancer, using STUB1(GTX122827) antibody at 1:500 dilution.
 Antigen Retrieval: Citrate buffer, pH 6.0, 15 min



GTX122827 WB Image

Various whole cell extracts (30 µg) were separated by 12% SDS-PAGE, and the membrane was blotted with STUB1 antibody [N1C3] (GTX122827) diluted at 1:10000.



GTX122827 WB Image

Various whole cell extracts (30 µg) were separated by 12% SDS-PAGE, and the membrane was blotted with STUB1 antibody [N1C3] (GTX122827) diluted at 1:10000.



For full product information, images and publications, please visit our [website](#).