

Hamartin / TSC1 antibody

Cat. No. GTX12288

Host	Rabbit
Clonality	Polyclonal
Isotype	IgG
Application	WB, IHC-P
Reactivity	Human, Mouse, Rat

Package
100 µg

APPLICATION

Application Note

*Optimal dilutions/concentrations should be determined by the researcher.

Suggested dilution	Recommended dilution
WB	0.1-0.5µg/ml
IHC-P	0.5-1µg/ml

Not tested in other applications.

Calculated MW 129.77 kDa. ([Note](#))

PROPERTIES

Form	Liquid
Buffer	0.1% Na ₂ HPO ₄ , 0.45% NaCl, 2.5% BSA
Preservative	0.025% Thimerosal, 0.025% Sodium azide
Storage	Store as concentrated solution. Centrifuge briefly prior to opening vial. For short-term storage (1-2 weeks), store at 4°C. For long-term storage, aliquot and store at -20°C or below. Avoid multiple freeze-thaw cycles.
Concentration	500 µg/ml (Please refer to the vial label for the specific concentration.)
Immunogen	A synthetic peptide corresponding to a sequence at the C-terminus of human Hamartin(1150-1164aa QLHIMDYNETHHEHS), identical to the related rat sequence, and different from the related mouse sequence by one amino acid.
Purification	Purified by antigen-affinity chromatography
Conjugation	Unconjugated

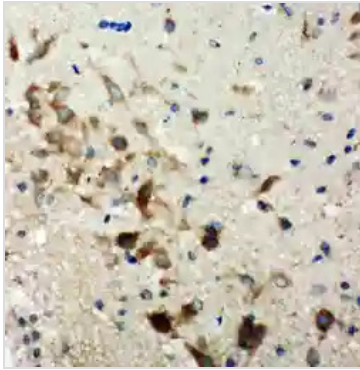
Note

For laboratory research use only. Not for any clinical, therapeutic, or diagnostic use in humans or animals. Not for animal or human consumption.

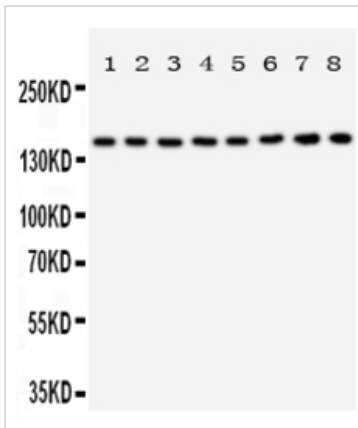
Purchasers shall not, and agree not to enable third parties to, analyze, copy, reverse engineer or otherwise attempt to determine the structure or sequence of the product.



For full product information, images and publications, please visit our [website](#).

DATA IMAGES

GTX12288 IHC-P Image

IHC-P analysis of rat brain tissue using GTX12288 Hamartin / TSC1 antibody.


GTX12288 WB Image

WB analysis of various samples using GTX12288 Hamartin / TSC1 antibody.

Lane 1 : rat skeletal muscle tissue lysate at 50ug

Lane 2 : rat heart tissue lysate at 50ug

Lane 3 : rat brain tissue lysate at 50ug

Lane 4 : rat lung tissue lysate at 50ug

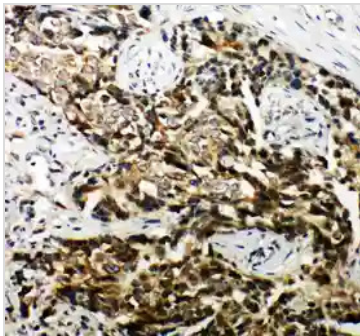
Lane 5 : 293T whole cell lysate at 40ug

Lane 6 : HeLa whole cell lysate at 40ug

Lane 7 : HT1080 whole cell lysate at 40ug

Lane 8 : SMMC whole cell lysate at 40ug

Dilution : 0.5 µg/mL


GTX12288 IHC-P Image

IHC-P analysis of human mammary cancer tissue using GTX12288 Hamartin / TSC1 antibody.



For full product information, images and publications, please visit our [website](https://www.genetex.com).