

SUPV3L1 antibody [C2C3], C-term

Cat. No. GTX123034

Host	Rabbit
Clonality	Polyclonal
Isotype	IgG
Applications	WB, ICC/IF
Reactivity	Human

References (2)

Package

100 µl, 25 µl

Applications

Application Note

*Optimal dilutions/concentrations should be determined by the researcher.

Suggested dilution	Recommended dilution
WB	1:500-1:3000
ICC/IF	1:100-1:1000

Not tested in other applications.

Calculated MW 88 kDa. ([Note](#))

Properties

Form	Liquid
Buffer	0.1M Tris, 0.1M Glycine, 20% Glycerol
Preservative	0.01% Thimerosal
Storage	Store as concentrated solution. Centrifuge briefly prior to opening vial. For short-term storage (1-2 weeks), store at 4°C. For long-term storage, aliquot and store at -20°C or below. Avoid multiple freeze-thaw cycles.
Concentration	1 mg/ml (Please refer to the vial label for the specific concentration.)
Immunogen	Recombinant protein encompassing a sequence within the C-terminus region of human SUPV3L1. The exact sequence is proprietary.
Purification	Purified by antigen-affinity chromatography.
Conjugation	Unconjugated

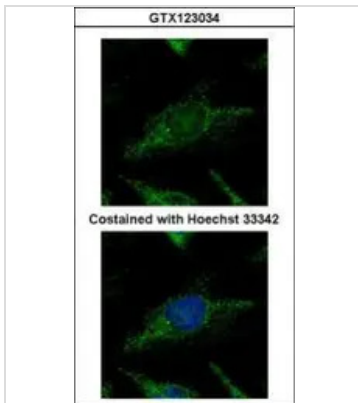
Note

For laboratory research use only. Not for any clinical, therapeutic, or diagnostic use in humans or animals. Not for animal or human consumption.

Purchasers shall not, and agree not to enable third parties to, analyze, copy, reverse engineer or otherwise attempt to determine the structure or sequence of the product.

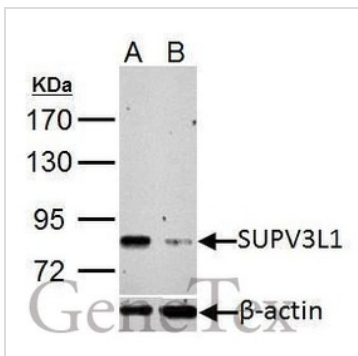
For full product information, images and publications, please visit our [website](#).

DATA IMAGES



GTX123034 ICC/IF Image

Confocal immunofluorescence analysis (Olympus FV10i) of methanol-fixed HeLa, using SUPV3L1(GTX123034) antibody (Green) at 1:500 dilution.



GTX123034 WB Image

SUPV3L1 antibody [C2C3], C-term detects SUPV3L1 protein by Western blot analysis.

Upper panel: SUPV3L1 antibody [C2C3], C-term (GTX123034)

Lower panel: beta Actin antibody (GTX109639)

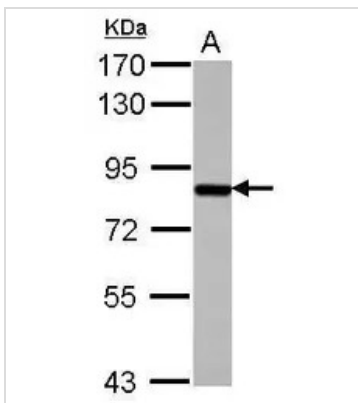
A. 30 µg HeLa whole cell lysate/extract

B. 30 µg whole cell lysate/extract of SUPV3L1 shRNA-transfected HeLa cells

7.5 % SDS-PAGE

SUPV3L1 antibody [C2C3], C-term (GTX123034) dilution: 1:1000

beta Actin antibody (GTX109639) dilution: 1:10000



GTX123034 WB Image

Sample (30 ug of whole cell lysate)

A: PC-3

7.5% SDS PAGE

GTX123034 diluted at 1:1000



For full product information, images and publications, please visit our [website](http://www.genetex.com).