

PMP70 antibody

Cat. No. GTX12314

Host	Rabbit
Clonality	Polyclonal
Isotype	IgG
Applications	WB, IHC-P
Reactivity	Human, Mouse, Rat

Package
100 µg

Applications

Application Note

*Optimal dilutions/concentrations should be determined by the researcher.

Suggested dilution	Recommended dilution
WB	0.1-0.5µg/ml
IHC-P	0.5-1µg/ml

Not tested in other applications.

Calculated MW 75.48 kDa. ([Note](#))

Properties

Form	Liquid
Buffer	0.1% Na ₂ HPO ₄ , 0.45% NaCl, 2.5% BSA
Preservative	0.025% Thimerosal, 0.025% Sodium azide
Storage	Store as concentrated solution. Centrifuge briefly prior to opening vial. For short-term storage (1-2 weeks), store at 4°C. For long-term storage, aliquot and store at -20°C or below. Avoid multiple freeze-thaw cycles.
Concentration	500 µg/ml (Please refer to the vial label for the specific concentration.)
Immunogen	A synthetic peptide corresponding to a sequence at the C-terminus of human PMP70(646-659aa EFKQITEDTVEFGS), different from the related mouse and rat sequences by one amino acid.
Purification	Purified by antigen-affinity chromatography
Conjugation	Unconjugated

Note

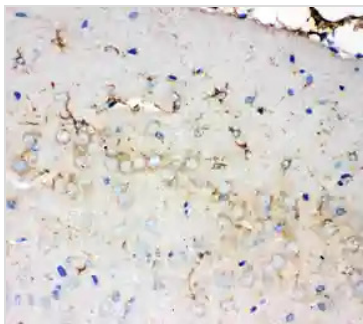
For laboratory research use only. Not for any clinical, therapeutic, or diagnostic use in humans or animals. Not for animal or human consumption.

Purchasers shall not, and agree not to enable third parties to, analyze, copy, reverse engineer or otherwise attempt to determine the structure or sequence of the product.



For full product information, images and publications, please visit our [website](#).

DATA IMAGES



GTX12314 IHC-P Image

IHC-P analysis of rat brain tissue using GTX12314 PMP70 antibody.

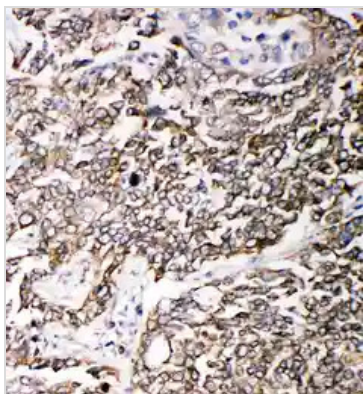


GTX12314 WB Image

WB analysis of various samples using GTX12314 PMP70 antibody.

Lane 1 : rat lung tissue lysate

Lane 2 : rat ovary tissue lysate



GTX12314 IHC-P Image

IHC-P analysis of human lung cancer tissue using GTX12314 PMP70 antibody.



For full product information, images and publications, please visit our [website](https://www.genetex.com).