

RED antibody

Cat. No. GTX123170

Host	Rabbit
Clonality	Polyclonal
Isotype	IgG
Applications	WB, ICC/IF, IHC-P
Reactivity	Human

Package
100 µl, 25 µl

Applications

Application Note

*Optimal dilutions/concentrations should be determined by the researcher.

Suggested dilution	Recommended dilution
WB	1:500-1:3000
ICC/IF	1:100-1:1000
IHC-P	1:100-1:1000

Not tested in other applications.

Calculated MW 66 kDa. ([Note](#))

Properties

Form	Liquid
Buffer	PBS, 20% Glycerol
Preservative	0.01% Thimerosal
Storage	Store as concentrated solution. Centrifuge briefly prior to opening vial. For short-term storage (1-2 weeks), store at 4°C. For long-term storage, aliquot and store at -20°C or below. Avoid multiple freeze-thaw cycles.
Concentration	0.77 mg/ml (Please refer to the vial label for the specific concentration.)
Immunogen	Recombinant protein encompassing a sequence within the center region of human RED. The exact sequence is proprietary.
Purification	Purified by antigen-affinity chromatography.
Conjugation	Unconjugated

Note

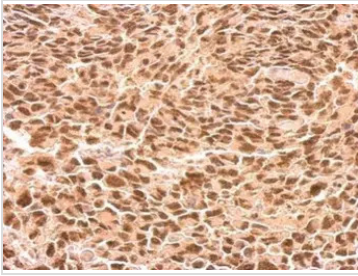
For laboratory research use only. Not for any clinical, therapeutic, or diagnostic use in humans or animals. Not for animal or human consumption.

Purchasers shall not, and agree not to enable third parties to, analyze, copy, reverse engineer or otherwise attempt to determine the structure or sequence of the product.



For full product information, images and publications, please visit our [website](#).

DATA IMAGES

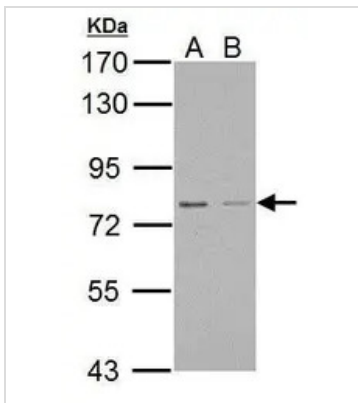
**GTX123170 IHC-P Image**

RED antibody detects IK protein at nucleus on H1299 xenograft by immunohistochemical analysis.

Sample: Paraffin-embedded H1299 xenograft.

RED antibody (GTX123170) dilution: 1:500.

Antigen Retrieval: Trilogy™ (EDTA based, pH 8.0) buffer, 15min

**GTX123170 WB Image**

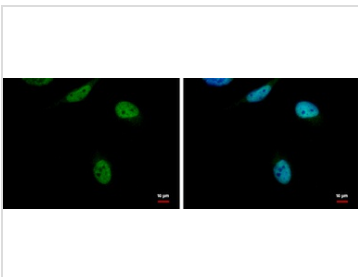
Sample (30 ug of whole cell lysate)

A: HeLa

B: HepG2

7.5% SDS PAGE

GTX123170 diluted at 1:1000

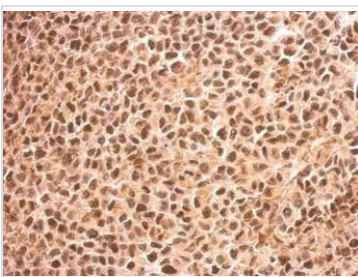
**GTX123170 ICC/IF Image**

RED antibody detects RED protein at nucleus by immunofluorescent analysis.

Sample: HeLa cells were fixed in 4% paraformaldehyde at RT for 15 min.

Green: RED protein stained by RED antibody (GTX123170) diluted at 1:500.

Blue: Hoechst 33342 staining.

**GTX123170 IHC-P Image**

RED antibody detects IK protein at nucleus on HeLa xenograft by immunohistochemical analysis.

Sample: Paraffin-embedded HeLa xenograft.

RED antibody (GTX123170) dilution: 1:500.

Antigen Retrieval: Trilogy™ (EDTA based, pH 8.0) buffer, 15min



For full product information, images and publications, please visit our [website](#).