

APP antibody [3E9]

Cat. No. GTX12338

Host	Mouse
Clonality	Monoclonal
Isotype	IgG1
Applications	WB, IHC-P
Reactivity	Human, Mouse

Package
50 µg

Applications

Application Note

IHC-P: Use at a concentration of 5 - 10 µg/ml. WB: Use at a concentration of 5 - 10 µg/ml. Predicted molecular weight: 87 kDa. Optimal dilutions/concentrations should be determined by the end user.

Calculated MW 87 kDa. ([Note](#))

Properties

Form	Liquid
Buffer	PBS, 1% Sucrose
Preservative	No preservatives
Storage	Store as concentrated solution. Centrifuge briefly prior to opening vial. For short-term storage (1-2 weeks), store at 4°C. For long-term storage, aliquot and store at -20°C or below. Avoid multiple freeze-thaw cycles.
Concentration	1 mg/ml (Please refer to the vial label for the specific concentration.)
Immunogen	Synthetic peptide: LEVPTDGNAGLLAEPQIAMFC, corresponding to amino acids 18-38 of Human Amyloid Precursor Protein.
Purification	Protein A purified
Conjugation	Unconjugated

Note

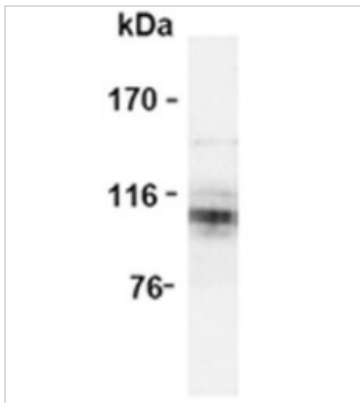
For laboratory research use only. Not for any clinical, therapeutic, or diagnostic use in humans or animals. Not for animal or human consumption.

Purchasers shall not, and agree not to enable third parties to, analyze, copy, reverse engineer or otherwise attempt to determine the structure or sequence of the product.



For full product information, images and publications, please visit our [website](#).

DATA IMAGES

**GTX12338 WB Image**

Western blot analysis of Amyloid Precursor Protein expression in mouse brain using APP mAb (3E9)



For full product information, images and publications, please visit our [website](#).