

## Smad1 antibody

Cat. No. GTX12344

Host	Rabbit
Clonality	Polyclonal
Isotype	IgG
Applications	WB, ICC/IF, IHC-P
Reactivity	Human, Mouse, Rat

Package  
100 µg

## Applications

## Application Note

\*Optimal dilutions/concentrations should be determined by the researcher.

Suggested dilution	Recommended dilution
WB	0.1-0.5µg/ml
ICC/IF	0.5-1µg/ml
IHC-P	0.5-1µg/ml

Not tested in other applications.

Calculated MW 52 kDa. ( [Note](#) )

## Properties

Form	Liquid
Buffer	0.1% Na <sub>2</sub> HPO <sub>4</sub> , 0.45% NaCl, 2.5% BSA
Preservative	0.025% Thimerosal, 0.025% Sodium azide
Storage	Store as concentrated solution. Centrifuge briefly prior to opening vial. For short-term storage (1-2 weeks), store at 4°C. For long-term storage, aliquot and store at -20°C or below. Avoid multiple freeze-thaw cycles.
Concentration	500 µg/ml (Please refer to the vial label for the specific concentration.)
Immunogen	A synthetic peptide corresponding to a sequence at the C-terminus of mouse Smad1(253-267aa AEISRGDVQAVAYEE), different from the related rat sequence by one amino acid, and different from the related human sequence by two amino acids.
Purification	Purified by antigen-affinity chromatography
Conjugation	Unconjugated

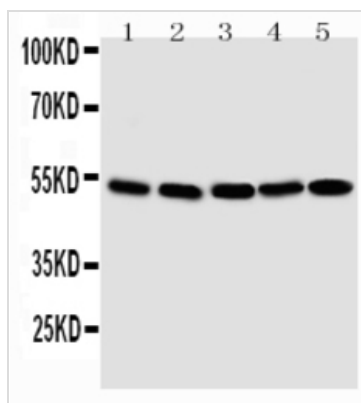
For full product information, images and publications, please visit our [website](#).

For laboratory research use only. Not for any clinical, therapeutic, or diagnostic use in humans or animals. Not for animal or human consumption.

## Note

Purchasers shall not, and agree not to enable third parties to, analyze, copy, reverse engineer or otherwise attempt to determine the structure or sequence of the product.

## DATA IMAGES



### GTX12344 WB Image

WB analysis of various samples using GTX12344 Smad1 antibody.

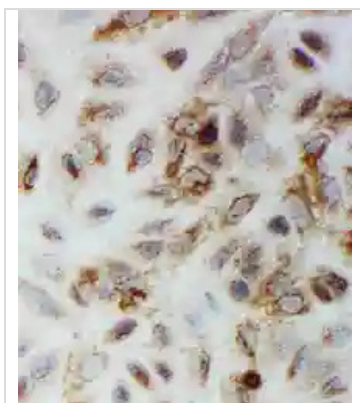
Lane 1 : SMMC cell lysate

Lane 2 : K562 cell lysate

Lane 3 : HT1080 cell lysate

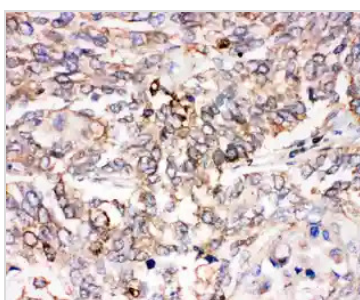
Lane 4 : HeLa cell lysate

Lane 5 : Jurkat cell lysate



### GTX12344 ICC/IF Image

ICC/IF analysis of A549 cell using GTX12344 Smad1 antibody.



### GTX12344 IHC-P Image

IHC-P analysis of human lung cancer tissue using GTX12344 Smad1 antibody.



For full product information, images and publications, please visit our [website](https://www.genetex.com).