

## PARP16 antibody

Cat. No. GTX123450

Host	Rabbit
Clonality	Polyclonal
Isotype	IgG
Applications	WB
Reactivity	Human

References ( 2 )  
Package  
100 µl, 25 µl

## Applications

## Application Note

\*Optimal dilutions/concentrations should be determined by the researcher.

Suggested dilution	Recommended dilution
WB	1:1000-1:10000

Not tested in other applications.

Calculated MW 36 kDa. ( [Note](#) )

Product Note KO/KD validation is based on published data (PMID: 36544740).

## Properties

Form Liquid

Buffer PBS, 1% BSA, 20% Glycerol

Preservative 0.01% Thimerosal

Storage Store as concentrated solution. Centrifuge briefly prior to opening vial. For short-term storage (1-2 weeks), store at 4°C. For long-term storage, aliquot and store at -20°C or below. Avoid multiple freeze-thaw cycles.

Concentration 1 mg/ml (Please refer to the vial label for the specific concentration.)

Immunogen Recombinant protein encompassing a sequence within the center region of human PARP16. The exact sequence is proprietary.

Purification Purified by antigen-affinity chromatography.

Conjugation Unconjugated

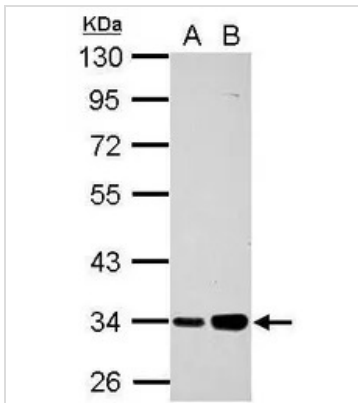
Note For laboratory research use only. Not for any clinical, therapeutic, or diagnostic use in humans or animals. Not for animal or human consumption.

Note Purchasers shall not, and agree not to enable third parties to, analyze, copy, reverse engineer or otherwise attempt to determine the structure or sequence of the product.



For full product information, images and publications, please visit our [website](#).

## DATA IMAGES

**GTX123450 WB Image**

Sample (30 ug of whole cell lysate)

A: PC-3

B: U87-MG

10% SDS PAGE

GTX123450 diluted at 1:5000



For full product information, images and publications, please visit our [website](#).