

## Drebrin antibody [M2F6]

Cat. No. GTX12350

|              |   |
|--------------|---|
| Host         | Mouse                                   |
| Clonality    | Monoclonal                              |
| Isotype      | IgG                                     |
| Applications | WB, IHC-P, IHC-Fr                       |
| Reactivity   | Human, Mouse, Rat, Cat, Guinea pig, Pig |

References ( 4 )

Package

50 µg

## Applications

## Application Note

IHC-P: Use at an assay dependent dilution. IHC-Fr: Use at an assay dependent dilution. WB: Use at an assay dependent dilution. Detects a band of approximately 110 kDa. The difference in the size of the detected band (~110 kDa) and in the predicted (~65 kDa) is due to the large number of negatively charged residues in this protein. Optimal dilutions/concentrations should be determined by the end user.

|               |   |
|---------------|---|
| Calculated MW | 72 kDa. ( <a href="#">Note</a> )  |
| Product Note  | This antibody detects Drebrin A and E in samples from human, mouse, rat, guinea pig, and cat origins and Drebrin E only in chicken samples. |

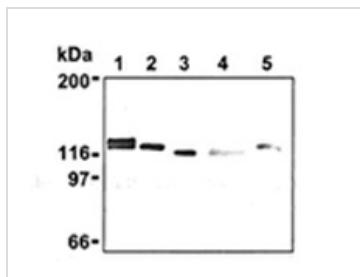
## Properties

|               |   |
|---------------|---|
| Form          | Liquid  |
| Buffer        | PBS pH7.2, 10mg/ml Sucrose  |
| Preservative  | No preservatives  |
| Storage       | Store as concentrated solution. Centrifuge briefly prior to opening vial. For short-term storage (1-2 weeks), store at 4°C. For long-term storage, aliquot and store at -20°C or below. Avoid multiple freeze-thaw cycles.  |
| Concentration | 1 mg/ml (Please refer to the vial label for the specific concentration.)  |
| Immunogen     | Chicken Drebrin E protein.  |
| Purification  | Protein A purified  |
| Conjugation   | Unconjugated  |
| Note          | <p>For laboratory research use only. Not for any clinical, therapeutic, or diagnostic use in humans or animals. Not for animal or human consumption.</p> <p>Purchasers shall not, and agree not to enable third parties to, analyze, copy, reverse engineer or otherwise attempt to determine the structure or sequence of the product.</p> |



For full product information, images and publications, please visit our [website](#).

## DATA IMAGES



### GTX12350 WB Image

Western blot analysis of Drebrin expression in mouse brain (1) NIH/3T3 (2), Jurkat (3), HeLa (4), and PC12 (5) using Drebrin mAb (M2F6).



For full product information, images and publications, please visit our [website](https://www.genetex.com).