

## Drebrin antibody [M2F6]

Cat. No. GTX12350

|              |   |
|--------------|---|
| Host         | Mouse                                   |
| Clonality    | Monoclonal                              |
| Isotype      | IgG                                     |
| Applications | WB, IHC-P, IHC-Fr                       |
| Reactivity   | Human, Mouse, Rat, Cat, Guinea pig, Pig |

References ( 4 )

Package

50 µg

## Applications

## Application Note

IHC-P: Use at an assay dependent dilution. IHC-Fr: Use at an assay dependent dilution. WB: Use at an assay dependent dilution. Detects a band of approximately 110 kDa. The difference in the size of the detected band (~110 kDa) and in the predicted (~65 kDa) is due to the large number of negatively charged residues in this protein. Optimal dilutions/concentrations should be determined by the end user.

|               |   |
|---------------|---|
| Calculated MW | 72 kDa. ( <a href="#">Note</a> )  |
| Product Note  | This antibody detects Drebrin A and E in samples from human, mouse, rat, guinea pig, and cat origins and Drebrin E only in chicken samples. |

## Properties

|               |  |
|---------------|--|
| Form          | Liquid   |
| Buffer        | PBS pH7.2, 10mg/ml Sucrose   |
| Preservative  | No preservative  |
| Storage       | Store as concentrated solution. Centrifuge briefly prior to opening vial. For short-term storage (1-2 weeks), store at 4°C. For long-term storage, aliquot and store at -20°C or below. Avoid multiple freeze-thaw cycles. |
| Concentration | 1 mg/ml (Please refer to the vial label for the specific concentration.)   |
| Immunogen     | Chicken Drebrin E protein.   |
| Purification  | Protein A purified   |
| Conjugation   | Unconjugated   |

## Note

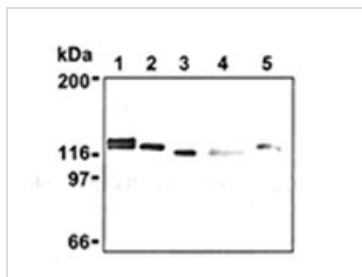
For laboratory research use only. Not for any clinical, therapeutic, or diagnostic use in humans or animals. Not for animal or human consumption.

Purchasers shall not, and agree not to enable third parties to, analyze, copy, reverse engineer or otherwise attempt to determine the structure or sequence of the product.



For full product information, images and publications, please visit our [website](#).

## DATA IMAGES



### GTX12350 WB Image

Western blot analysis of Drebrin expression in mouse brain (1) NIH/3T3 (2), Jurkat (3), HeLa (4), and PC12 (5) using Drebrin mAb (M2F6).



For full product information, images and publications, please visit our [website](#).