

Drebrin antibody [M2F6]

Cat. No. GTX12350

Host	Mouse
Clonality	Monoclonal
Isotype	IgG
Applications	WB, IHC-P, IHC-Fr
Reactivity	Human, Mouse, Rat, Cat, Guinea pig, Pig

References (4)

Package

50 µg

Applications

Application Note

IHC-P: Use at an assay dependent dilution. IHC-Fr: Use at an assay dependent dilution. WB: Use at an assay dependent dilution. Detects a band of approximately 110 kDa. The difference in the size of the detected band (~110 kDa) and in the predicted (~65 kDa) is due to the large number of negatively charged residues in this protein. Optimal dilutions/concentrations should be determined by the end user.

Calculated MW	72 kDa. (Note)
Product Note	This antibody detects Drebrin A and E in samples from human, mouse, rat, guinea pig, and cat origins and Drebrin E only in chicken samples.

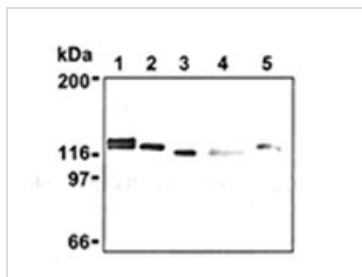
Properties

Form	Liquid
Buffer	PBS pH7.2, 10mg/ml Sucrose
Preservative	No preservative
Storage	Store as concentrated solution. Centrifuge briefly prior to opening vial. For short-term storage (1-2 weeks), store at 4°C. For long-term storage, aliquot and store at -20°C or below. Avoid multiple freeze-thaw cycles.
Concentration	1 mg/ml (Please refer to the vial label for the specific concentration.)
Immunogen	Chicken Drebrin E protein.
Purification	Protein A purified
Conjugation	Unconjugated
Note	<p>For laboratory research use only. Not for any clinical, therapeutic, or diagnostic use in humans or animals. Not for animal or human consumption.</p> <p>Purchasers shall not, and agree not to enable third parties to, analyze, copy, reverse engineer or otherwise attempt to determine the structure or sequence of the product.</p>



For full product information, images and publications, please visit our [website](#).

DATA IMAGES



GTX12350 WB Image

Western blot analysis of Drebrin expression in mouse brain (1) NIH/3T3 (2), Jurkat (3), HeLa (4), and PC12 (5) using Drebrin mAb (M2F6).



For full product information, images and publications, please visit our [website](https://www.genetex.com).