

LRRC59 antibody

Cat. No. GTX123532

Host	Rabbit
Clonality	Polyclonal
Isotype	IgG
Application	WB, IHC-P
Reactivity	Human, Mouse

Package
100 µl, 25 µl

APPLICATION

Application Note

*Optimal dilutions/concentrations should be determined by the researcher.

Suggested dilution	Recommended dilution
WB	1:500-1:3000
IHC-P	1:100-1:1000

Not tested in other applications.

Calculated MW 35 kDa. ([Note](#))

PROPERTIES

Form	Liquid
Buffer	PBS, 20% Glycerol
Preservative	0.01% Thimerosal
Storage	Store as concentrated solution. Centrifuge briefly prior to opening vial. For short-term storage (1-2 weeks), store at 4°C. For long-term storage, aliquot and store at -20°C or below. Avoid multiple freeze-thaw cycles.
Concentration	1 mg/ml (Please refer to the vial label for the specific concentration.)
Immunogen	Recombinant protein encompassing a sequence within the center region of human LRRC59. The exact sequence is proprietary.
Purification	Purified by antigen-affinity chromatography.
Conjugation	Unconjugated

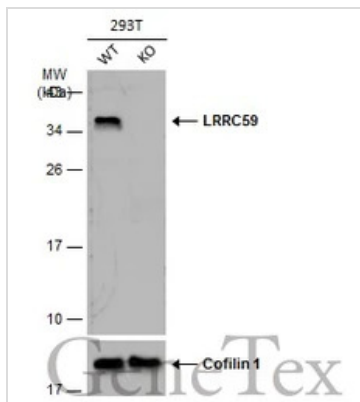
Note

For laboratory research use only. Not for any clinical, therapeutic, or diagnostic use in humans or animals. Not for animal or human consumption.

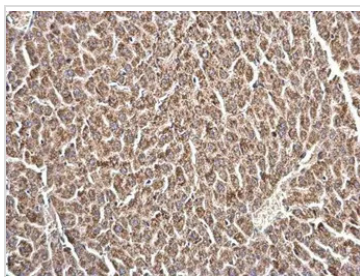
Purchasers shall not, and agree not to enable third parties to, analyze, copy, reverse engineer or otherwise attempt to determine the structure or sequence of the product.



For full product information, images and publications, please visit our [website](#).

DATA IMAGES

GTx123532 WB Image

Wild-type (WT) and LRR59 knockout (KO) 293T cell extracts (30 µg) were separated by 12% SDS-PAGE, and the membrane was blotted with LRR59 antibody (GTx123532) diluted at 1:1000. The HRP-conjugated anti-rabbit IgG antibody (GTx213110-01) was used to detect the primary antibody.

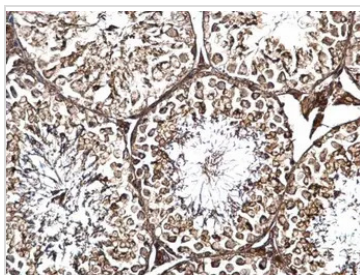

GTx123532 IHC-P Image

LRR59 antibody detects LRR59 protein at cytosol on mouse testis by immunohistochemical analysis.

Sample: Paraffin-embedded mouse testis.

LRR59 antibody (GTx123532) dilution: 1:500.

Antigen Retrieval: Trilogy™ (EDTA based, pH 8.0) buffer, 15min

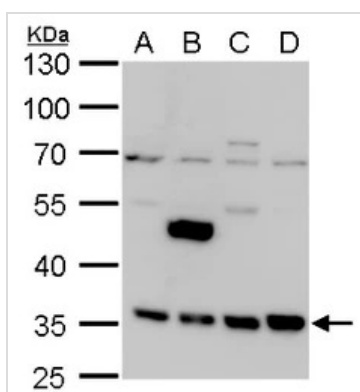

GTx123532 IHC-P Image

LRR59 antibody detects LRR59 protein at cytosol on mouse testis by immunohistochemical analysis.

Sample: Paraffin-embedded mouse testis.

LRR59 antibody (GTx123532) dilution: 1:500.

Antigen Retrieval: Trilogy™ (EDTA based, pH 8.0) buffer, 15min


GTx123532 WB Image

LRR59 antibody detects LRR59 protein by western blot analysis.

A. 30 µg 293T whole cell lysate/extract

B. 30 µg A431 whole cell lysate/extract

C. 30 µg HeLa whole cell lysate/extract

D. 30 µg HepG2 whole cell lysate/extract

10 % SDS-PAGE

LRR59 antibody (GTx123532) dilution: 1:1000



For full product information, images and publications, please visit our [website](https://www.genetex.com).