

Syntaxin 2 antibody

Cat. No. GTX12369

Host	Rabbit
Clonality	Polyclonal
Isotype	IgG
Applications	WB, IP, IHC
Reactivity	Human, Mouse, Rat, Rabbit, Sheep, Drosophila, Hamster, Pig, Monkey

Package

50 µg

Applications

Application Note

For IP: Use at a concentration of 10 µg/ml. For WB: Use at a concentration of 1 µg/ml. Optimal dilutions/concentrations should be determined by the researcher.

Calculated MW 33 kDa. ([Note](#))

Properties

Form	Liquid
Buffer	PBS, 50% Glycerol
Preservative	0.09% Sodium azide
Storage	Store as concentrated solution. Centrifuge briefly prior to opening vial. For short-term storage (1-2 weeks), store at 4°C. For long-term storage, aliquot and store at -20°C or below. Avoid multiple freeze-thaw cycles.
Concentration	1 mg/ml (Please refer to the vial label for the specific concentration.)
Immunogen	Synthetic peptide: MRDRLPDLTACRKSSDDGDN conjugated to KLH, corresponding to amino acids 1-19 of Rat Syntaxin 2.
Purification	Immunogen affinity purified
Conjugation	Unconjugated

Note

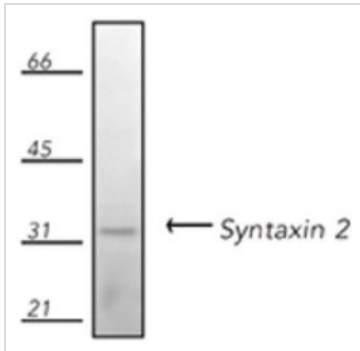
For laboratory research use only. Not for any clinical, therapeutic, or diagnostic use in humans or animals. Not for animal or human consumption.

Purchasers shall not, and agree not to enable third parties to, analyze, copy, reverse engineer or otherwise attempt to determine the structure or sequence of the product.

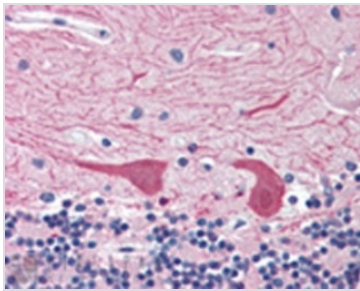


For full product information, images and publications, please visit our [website](#).

DATA IMAGES

**GTX12369 WB Image**

Western blot analysis of human Jurkat cell lysate, probed with Syntaxin 2 pAb

**GTX12369 IHC Image**

Immunohistochemistry analysis of human brain, cerebellum tissue stained with Syntaxin 2, pAb at 10µg/ml.



For full product information, images and publications, please visit our [website](#).