

## CD134 antibody

**Cat. No. GTX12380**

<b>Host</b>	Rabbit
<b>Clonality</b>	Polyclonal
<b>Isotype</b>	IgG
<b>Applications</b>	WB
<b>Reactivity</b>	Human

**Package**  
100 µg

## Applications

**Application Note**

\*Optimal dilutions/concentrations should be determined by the researcher.

Suggested dilution	Recommended dilution
WB	0.1-0.5µg/ml

Not tested in other applications.

**Calculated MW** 29.34 kDa. ([Note](#))

## Properties

<b>Form</b>	Liquid
<b>Buffer</b>	0.1% Na <sub>2</sub> HPO <sub>4</sub> , 0.45% NaCl, 2.5% BSA
<b>Preservative</b>	0.025% Thimerosal, 0.025% Sodium azide
<b>Storage</b>	Store as concentrated solution. Centrifuge briefly prior to opening vial. For short-term storage (1-2 weeks), store at 4°C. For long-term storage, aliquot and store at -20°C or below. Avoid multiple freeze-thaw cycles.
<b>Concentration</b>	500 µg/ml (Please refer to the vial label for the specific concentration.)
<b>Immunogen</b>	A synthetic peptide corresponding to a sequence at the N-terminus of human CD134(29-47aa LHCVGDYPSNDRRCHECR).
<b>Purification</b>	Purified by antigen-affinity chromatography
<b>Conjugation</b>	Unconjugated

**Note**

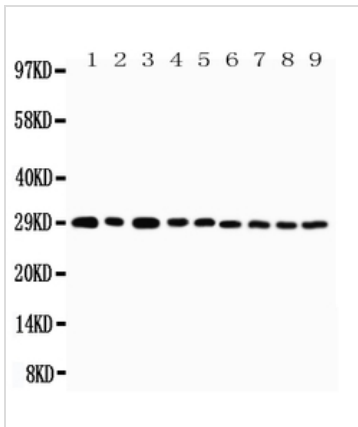
For laboratory research use only. Not for any clinical, therapeutic, or diagnostic use in humans or animals. Not for animal or human consumption.

Purchasers shall not, and agree not to enable third parties to, analyze, copy, reverse engineer or otherwise attempt to determine the structure or sequence of the product.



For full product information, images and publications, please visit our [website](#).

## DATA IMAGES

**GTX12380 WB Image**

WB analysis of various samples using GTX12380 CD134 antibody.

Lane 1 : U87 cell lysate

Lane 2 : HeLa cell lysate

Lane 3 : HT1080 cell lysate

Lane 4 : Jurkat cell lysate

Lane 5 : COLO320 cell lysate

Lane 6 : MCF-7 cell lysate

Lane 7 : SHC cell lysate

Lane 8 : COLO320 cell lysate

Lane 9 : SGC cell lysate



For full product information, images and publications, please visit our [website](#).