

## SLC16A4 antibody

Cat. No. GTX12399

<b>Host</b>	Rabbit
<b>Clonality</b>	Polyclonal
<b>Isotype</b>	IgG
<b>Applications</b>	WB, IHC-P
<b>Reactivity</b>	Human, Mouse, Rat

**Package**  
100 µg

## Applications

## Application Note

\*Optimal dilutions/concentrations should be determined by the researcher.

Suggested dilution	Recommended dilution
WB	0.1-0.5µg/ml
IHC-P	0.5-1µg/ml

Not tested in other applications.

**Calculated MW** 54.02 kDa. ([Note](#))

## Properties

<b>Form</b>	Liquid
<b>Buffer</b>	0.1% Na <sub>2</sub> HPO <sub>4</sub> , 0.45% NaCl, 2.5% BSA
<b>Preservative</b>	0.025% Thimerosal, 0.025% Sodium azide
<b>Storage</b>	Store as concentrated solution. Centrifuge briefly prior to opening vial. For short-term storage (1-2 weeks), store at 4°C. For long-term storage, aliquot and store at -20°C or below. Avoid multiple freeze-thaw cycles.
<b>Concentration</b>	500 µg/ml (Please refer to the vial label for the specific concentration.)
<b>Immunogen</b>	A synthetic peptide corresponding to a sequence at the N-terminus of human SLC16A4(134-148aa WTTKYFKRLALST), different from the related rat and mouse sequences by two amino acids.
<b>Purification</b>	Purified by antigen-affinity chromatography
<b>Conjugation</b>	Unconjugated

## Note

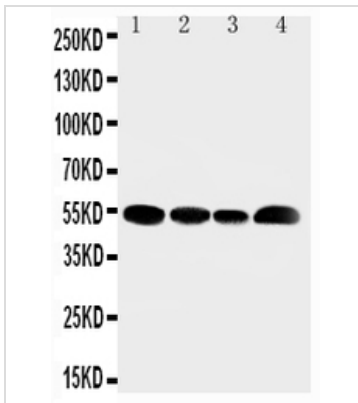
For laboratory research use only. Not for any clinical, therapeutic, or diagnostic use in humans or animals. Not for animal or human consumption.

Purchasers shall not, and agree not to enable third parties to, analyze, copy, reverse engineer or otherwise attempt to determine the structure or sequence of the product.



For full product information, images and publications, please visit our [website](#).

## DATA IMAGES



### GTX12399 WB Image

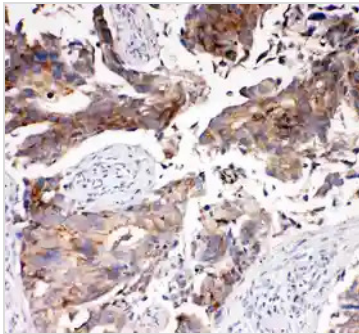
WB analysis of various samples using GTX12399 SLC16A4 antibody.

Lane 1 : rat testis tissue lysate

Lane 2 : Jurkat cell lysate

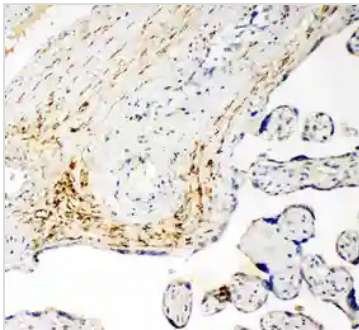
Lane 3 : HeLa cell lysate

Lane 4 : MCF-7 cell lysate



### GTX12399 IHC-P Image

IHC-P analysis of human mammary cancer tissue using GTX12399 SLC16A4 antibody.



### GTX12399 IHC-P Image

IHC-P analysis of human placenta cancer tissue using GTX12399 SLC16A4 antibody.



For full product information, images and publications, please visit our [website](https://www.genetex.com).