

Histone H3R17me2 (Asymmetric Di-methyl Arg17) antibody

Cat. No. GTX124113

Host	Rabbit
Clonality	Polyclonal
Isotype	IgG
Applications	WB, IHC-P, Dot
Reactivity	Human, Mouse

References (1)

Package

100 µl, 25 µl

Applications

Application Note

*Optimal dilutions/concentrations should be determined by the researcher.

Suggested dilution	Recommended dilution
WB	1:500-1:3000
IHC-P	1:100-1:1000
Dot	Assay dependent

Not tested in other applications.

Properties

Form	Liquid
Buffer	PBS, 1% BSA, 20% Glycerol
Preservative	0.01% Thimerosal
Storage	Store as concentrated solution. Centrifuge briefly prior to opening vial. For short-term storage (1-2 weeks), store at 4°C. For long-term storage, aliquot and store at -20°C or below. Avoid multiple freeze-thaw cycles.
Concentration	0.62 mg/ml (Please refer to the vial label for the specific concentration.)
Immunogen	Carrier-protein conjugated synthetic peptide surrounding asymmetric di-methyl Arg17 of human Histone H3. The exact sequence is proprietary.
Purification	Purified by antigen-affinity chromatography.
Conjugation	Unconjugated

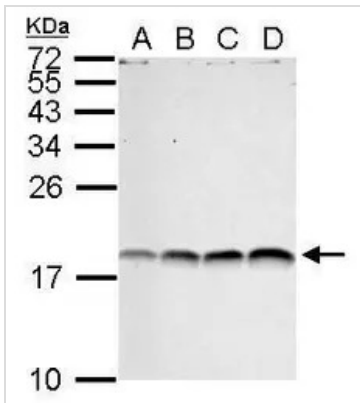
Note

For laboratory research use only. Not for any clinical, therapeutic, or diagnostic use in humans or animals. Not for animal or human consumption.

Purchasers shall not, and agree not to enable third parties to, analyze, copy, reverse engineer or otherwise attempt to determine the structure or sequence of the product.

For full product information, images and publications, please visit our [website](#).

DATA IMAGES

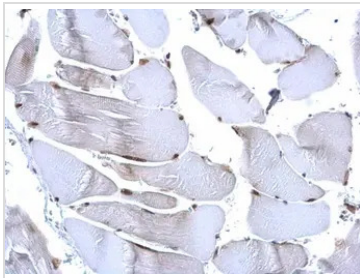
**GTX124113 WB Image**

Histone3 (di-methyl Arg17) antibody detects HIST1H3A protein by Western blot analysis.

- A. 30 μ g 293T whole cell lysate/extract
- B. 30 μ g A431 whole cell lysate/extract
- C. 30 μ g HeLa whole cell lysate/extract
- D. 30 μ g HepG2 whole cell lysate/extract

15 % SDS-PAGE

Histone3 (di-methyl Arg17) antibody (GTX124113) dilution: 1:1000

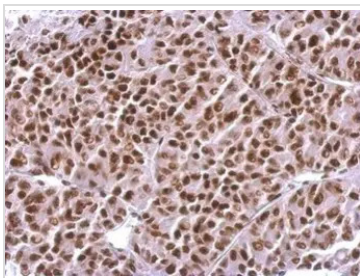
**GTX124113 IHC-P Image**

Histone H3R17me2 (dimethyl Arg17) antibody detects Histone H3R17me2 (dimethyl Arg17) protein at nucleus on mouse muscle by immunohistochemical analysis.

Sample: Paraffin-embedded mouse muscle.

Histone H3R17me2 (dimethyl Arg17) antibody (GTX124113) dilution: 1:500.

Antigen Retrieval: Trilogy™ (EDTA based, pH 8.0) buffer, 15min

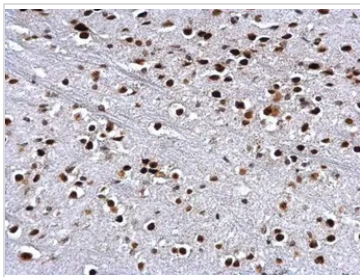
**GTX124113 IHC-P Image**

Histone3 (di-methyl Arg17) antibody detects HIST1H3A protein at nucleus on AGS xenograft by immunohistochemical analysis.

Sample: Paraffin-embedded AGS xenograft.

Histone3 (di-methyl Arg17) antibody (GTX124113) dilution: 1:500.

Antigen Retrieval: Trilogy™ (EDTA based, pH 8.0) buffer, 15min

**GTX124113 IHC-P Image**

Histone H3R17me2 (dimethyl Arg17) antibody detects Histone H3R17me2 (dimethyl Arg17) protein at nucleus on mouse middle brain by immunohistochemical analysis.

Sample: Paraffin-embedded mouse middle brain.

Histone H3R17me2 (dimethyl Arg17) antibody (GTX124113) dilution: 1:500.

Antigen Retrieval: Trilogy™ (EDTA based, pH 8.0) buffer, 15min



For full product information, images and publications, please visit our [website](#).