

Histone H3R2me2 (Asymmetric Di-methyl Arg2) antibody

Cat. No. GTX124114

Host	Rabbit
Clonality	Polyclonal
Isotype	IgG
Application	WB, Dot
Reactivity	Human

Package
100 µl, 25 µl

APPLICATION

Application Note

*Optimal dilutions/concentrations should be determined by the researcher.

Suggested dilution	Recommended dilution
WB	1:500-1:3000
Dot	Assay dependent

Not tested in other applications.

PROPERTIES

Form	Liquid
Buffer	PBS, 1% BSA, 20% Glycerol
Preservative	0.01% Thimerosal
Storage	Store as concentrated solution. Centrifuge briefly prior to opening vial. For short-term storage (1-2 weeks), store at 4°C. For long-term storage, aliquot and store at -20°C or below. Avoid multiple freeze-thaw cycles.
Concentration	0.72 mg/ml (Please refer to the vial label for the specific concentration.)
Immunogen	Carrier-protein conjugated synthetic peptide surrounding asymmetric di-methyl Arg2 of human Histone H3. The exact sequence is proprietary.
Purification	Purified by antigen-affinity chromatography.
Conjugation	Unconjugated

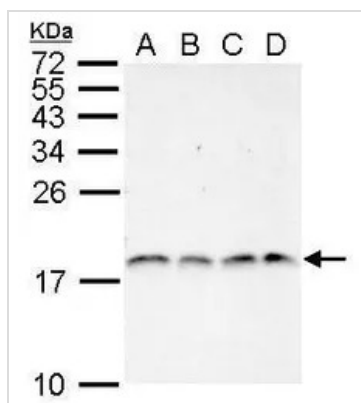
Note

For laboratory research use only. Not for any clinical, therapeutic, or diagnostic use in humans or animals. Not for animal or human consumption.

Purchasers shall not, and agree not to enable third parties to, analyze, copy, reverse engineer or otherwise attempt to determine the structure or sequence of the product.



For full product information, images and publications, please visit our [website](#).

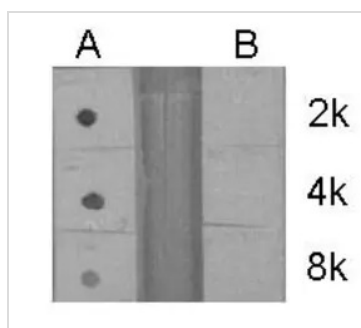
DATA IMAGES

GTX124114 WB Image

Histone3 (di-methyl Arg2) antibody detects HIST1H3A protein by Western blot analysis.

- A. 30 μ g 293T whole cell lysate/extract
- B. 30 μ g A431 whole cell lysate/extract
- C. 30 μ g HeLa whole cell lysate/extract
- D. 30 μ g HepG2 whole cell lysate/extract

15 % SDS-PAGE

Histone3 (di-methyl Arg2) antibody (GTX124114) dilution: 1:1000


GTX124114 Dot Image

Dotblot analysis of anti-Histone3 (di-methyl Arg2) antibody with peptide samples.

Peptide samples (0.1 μ g) were spotted onto positively charged nylon membrane and blotted with Histone3 (di-methyl Arg2) antibody (GTX124114) at different dilution as indicated.

A: Peptide samples of Histone3 (di-methyl Arg2)

B: Peptide samples of Histone H3.1



For full product information, images and publications, please visit our [website](https://www.genetex.com).