

## PPAR alpha antibody [3B6/PPAR]

Cat. No. GTX12412

Host	Mouse
Clonality	Monoclonal
Isotype	IgG2b
Applications	WB, ICC/IF, FCM, IP, ChIP assay, Gel supershift assays
Reactivity	Human, Mouse, Rat, Rabbit, Bovine

Package  
50 µg

## Applications

## Application Note

\*Optimal dilutions/concentrations should be determined by the researcher.

Suggested dilution	Recommended dilution
WB	2-5 µg/ml
ICC/IF	2µg/ml
FCM	1µg per 10 <sup>6</sup> cells
IP	Assay dependent
ChIP assay	Assay dependent
Gel supershift assays	Assay dependent

Not tested in other applications.

Calculated MW 52 kDa. ( [Note](#) )

## Properties

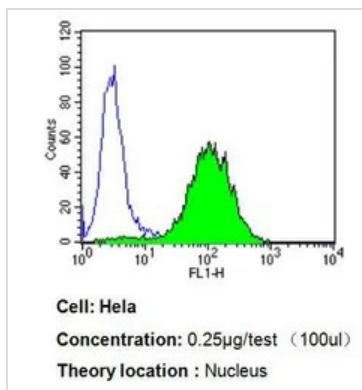
Form	Liquid
Buffer	PBS
Preservative	0.05% Sodium azide
Storage	Store as concentrated solution. Centrifuge briefly prior to opening vial. For short-term storage (1-2 weeks), store at 4°C. For long-term storage, aliquot and store at -20°C or below. Avoid multiple freeze-thaw cycles.
Concentration	1 mg/ml (Please refer to the vial label for the specific concentration.)
Immunogen	Purified recombinant PPAR alpha protein.
Purification	Purified IgG
Conjugation	Unconjugated

For full product information, images and publications, please visit our [website](#).

For laboratory research use only. Not for any clinical, therapeutic, or diagnostic use in humans or animals. Not for animal or human consumption.

**Note**

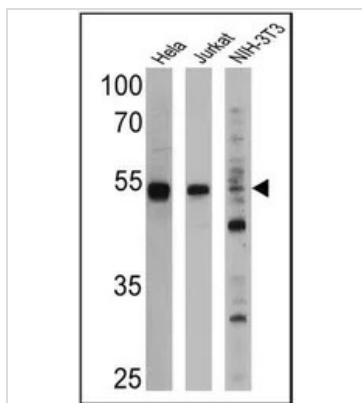
Purchasers shall not, and agree not to enable third parties to, analyze, copy, reverse engineer or otherwise attempt to determine the structure or sequence of the product.

**DATA IMAGES**

**GTX12412 FCM Image**

FACS analysis of HeLa cells( $1-5 \times 10^6$  cells/ml) using GTX12412 PPAR alpha antibody [3B6/PPAR] compared to an isotype control (blue).

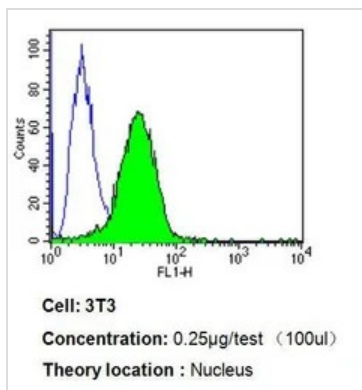
Dilution : 0.25 ug/test for 60 min at room temperature

Fixation : 2% paraformaldehyde


**GTX12412 WB Image**

WB analysis of 25 ug of HeLa (Lane 1), Jurkat (Lane 2), and NIH-3T3 cell lysates (Lane 3) using GTX12412 PPAR alpha antibody [3B6/PPAR].

Dilution : 1:1000 (lane 1 and 2) & 1:500 (lane 3)


**GTX12412 FCM Image**

FACS analysis of 3T3 cells( $1-5 \times 10^6$  cells/ml) using GTX12412 PPAR alpha antibody [3B6/PPAR] compared to an isotype control (blue).

Dilution : 0.25 ug/test for 60 min at room temperature

Fixation : 2% paraformaldehyde



For full product information, images and publications, please visit our [website](http://www.genetex.com).