

DLK/MAP3K12 antibody

Cat. No. GTX124127

Host	Rabbit
Clonality	Polyclonal
Isotype	IgG
Applications	WB, IHC-P, IHC-Fr
Reactivity	Human, Mouse, Rat

References (15)

★★★★★ Review (2)

Package

100 µl, 25 µl

Applications

Application Note

*Optimal dilutions/concentrations should be determined by the researcher.

Suggested dilution	Recommended dilution
WB	1:500-1:3000
IHC-P	1:100-1:1000
IHC-Fr	1:100-1:1000

Not tested in other applications.

Calculated MW 96 kDa. ([Note](#))

Properties

Form	Liquid
Buffer	PBS, 20% Glycerol
Preservative	0.025% ProClin 300
Storage	Store as concentrated solution. Centrifuge briefly prior to opening vial. For short-term storage (1-2 weeks), store at 4°C. For long-term storage, aliquot and store at -20°C or below. Avoid multiple freeze-thaw cycles.
Concentration	0.93 mg/ml (Please refer to the vial label for the specific concentration.)
Immunogen	Recombinant protein encompassing a sequence within the center region of mouse DLK/MAP3K12. The exact sequence is proprietary.
Purification	Purified by antigen-affinity chromatography.
Conjugation	Unconjugated

Note

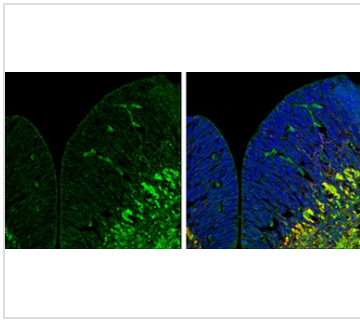
For laboratory research use only. Not for any clinical, therapeutic, or diagnostic use in humans or animals. Not for animal or human consumption.

Purchasers shall not, and agree not to enable third parties to, analyze, copy, reverse engineer or otherwise attempt to determine the structure or sequence of the product.

For full product information, images and publications, please visit our [website](#).

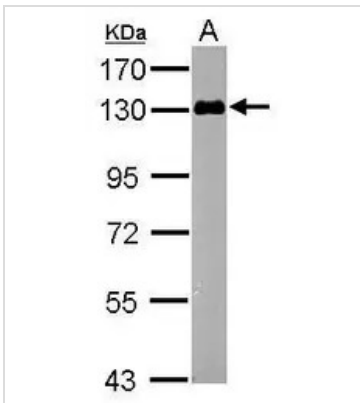
Date 2026 / 04 / 05 Page 1 of 2

DATA IMAGES



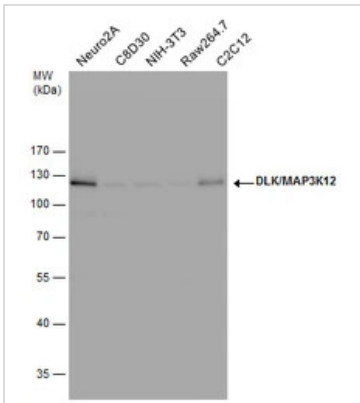
GTX124127 IHC-Fr Image

DLK/MAP3K12 antibody detects DLK/MAP3K12 protein expression by immunohistochemical analysis.
 Sample: Frozen sectioned E13.5 Rat brain.
 Green: DLK/MAP3K12 protein stained by DLK/MAP3K12 antibody (GTX124127) diluted at 1:250.
 Red: beta Tubulin 3/ TUJ1, a mature neuron marker, stained by beta Tubulin 3/ TUJ1 antibody [GT11710] (GTX631836) diluted at 1:500.
 Blue: Fluoroshield with DAPI (GTX30920).



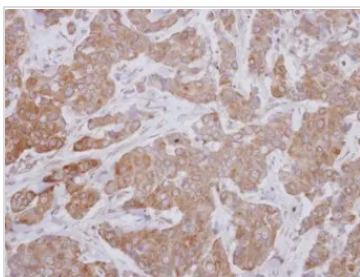
GTX124127 WB Image

Sample (50 µg of whole cell lysate)
 A: mouse brain
 7.5% SDS PAGE
 GTX124127 diluted at 1:1000
 The HRP-conjugated anti-rabbit IgG antibody (GTX213110-01) was used to detect the primary antibody.



GTX124127 WB Image

DLK/MAP3K12 antibody detects DLK/MAP3K12 protein by western blot analysis. Various whole cell extracts (30 µg) were separated by 10% SDS-PAGE, and the membrane was blotted with DLK/MAP3K12 antibody (GTX124127) diluted by 1:1000. The HRP-conjugated anti-rabbit IgG antibody (GTX213110-01) was used to detect the primary antibody.



GTX124127 IHC-P Image

Immunohistochemical analysis of paraffin-embedded human breast cancer, using MAP3K12(GTX124127) antibody at 1:250 dilution.



For full product information, images and publications, please visit our [website](#).